



ZIMMER+ROHDE



EDITION wallpaper collection | Collection 2020

EDITION – the issuing or publication of a work and/or its origin story; the opportunity to get a close and immersive look behind the scenes. Zimmer + Rohde's EDITION wallpaper collection is focused on the process used to manufacture it, achieved by highlighting the craftsmanship that goes into creating the fabrics, either as a base material, texture or appliqué. After all, Zimmer + Rohde has been working with the material for more than 120 years now.

In seeking out its origins, EDITION returns to its creative roots: the colour, material and manufacture process. In an abstract expressionist style, the collection experiments with coloured fields, the application of colour, the blending of materials and various different layering techniques.

Just like the collector's and luxury editions are, all wallpapers were originally a handcrafted product. To create the illusion of depth you find in CREASE, delicate textile fabrics are carefully dyed, pleated and then finished. MATRIX synthesises coloured, cut, frayed and appliquéd pieces of fabric to complete the puzzle. RAFFIA PLAIN is a richly textured wall covering that paints the tale of the natural fibres from the raffia palm, which is native to Madagascar, and woven on traditional handlooms.

EDITION represents both a return to the roots and Zimmer + Rohde's new and expanded in-house expertise in textiles. Each wallpaper is a display of remarkable craftsmanship and an expression of the creative process in any room or on any wall.



ZIMMER+ROHDE

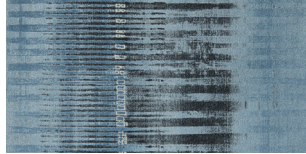
EDITION | Collection 2020

Fjord | 50063

Five colours

Fleece wallpaper | non-woven

Width: 53 cm



The fractured vertical lines on the FJORD wallpaper organically and artfully crisscross the wall. An interplay of effects marks out the wall covering. The fabric alternates masterfully between glossy and matt, this effect being further enhanced by the targeted placement of contrasts. Whether as a light shimmer in bright hues or as a bold accent, FJORD appeals to all the senses and is remarkably versatile in its five different colours.

Tide | 50064

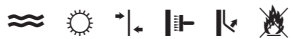
Six colours

Fleece wallpaper | non-woven

Width: 53 cm

Repeat: 32 cm

partially staggered | half drop



TIDE is the understated companion for any wall and reveals at second glance a striking, practically three-dimensional sense of depth. Its fragmented surface creates subtle, shimmering effects that form an eye-catching contrast to the rough structure which covers the entire surface like an organic mesh. In six natural colours that alternate from bold and vivid to soft and understated, TIDE blends effortlessly into the room and leaves the option open for further creative design choices.

Tropical Wall | 50066

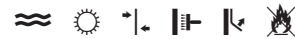
Two colours

Fleece wallpaper | non-woven

Width: 68 cm

Repeat: 64 cm

partially staggered | half drop



With TROPICAL WALL, the name says it all. A rich tapestry of agave, monstera, and fern leaves are seen across the entire surface, drawing your gaze into an exotic world.

TROPICAL WALL has delicate, subtle structures on the surface of the material which, in combination with its soft, abstract tones, lend it its modern look. Produced as a two-dimensional rotary print with gentle accents and contrasts, this design skillfully blends into the room as an emotional highlight.

Rainbow | 50067

Three colours

Fleece wallpaper | non-woven

Width: 68 cm

Repeat: 64 cm



RAINBOW is the successful interpretation of a masterful water-colour, reimagined using the conventional rotogravure technique that makes it possible to apply thin lines and ultra-fine colour gradients.

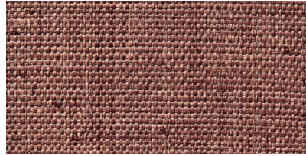
Finely matched hues are interwoven artfully and create a poetic, modern surface effect. Like a patchwork, the background is made up of geometric shapes and produces vertical lines, the direction of which is further underscored by a fine structure reminiscent of natural silk.



ZIMMER+ROHDE

Raffia Weave | 50068

Eight colours
Raffia on fleece backing |
raffia on non-woven
Width: 90 cm

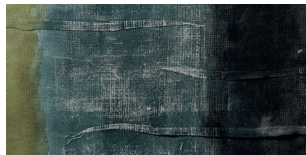


Even the process of producing this extraordinary single-colour fabric tells a special story. It all begins with natural fibres from the raffia palm native to Madagascar, which are woven in South-east Asia on traditional handlooms. The fragile weave gains its individual colours in a piece-dyeing process, and is laminated onto a strong backing material as a final step.

This manual process produces a lush, natural appearance, underscored by the combination of the irregularities in the dye and texture of the raffia fibre and the way it is processed. The result is an exclusive wall design, whose texture and narrative lend any room a particular sense of depth.

Crease | 50069

Four colours
Textile on fleece backing |
polyester on non woven
Width: 91 cm

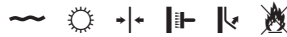


CREASE is brought to life by its three-dimensional textile fabric. It is produced in a complex, multistep process performed primarily by hand.

At the start of this process, vertical coloured stripes are applied to a delicate fabric, after which it is placed on top of a stable fleece backing. The art of lamination lies in placing folds in the fabric at regular intervals, which lend this wall covering its trademark look. In the final step, the specially produced textured patterns are applied to the vertical coloured surfaces, the contrast of which gives rise to an extraordinary illusion of depth.

Matrix | 50070

Three colours
Textile on fleece backing |
polyester on non woven
Width: 91 cm
Repeat: 89 cm



MATRIX features a large, expressive patchwork design that is an artful addition to any room. Skill, precision and craftsmanship come together in this wall covering, creating a bridge to Zimmer + Rohde's textile roots.

The design is based on a semi-transparent fabric which is dyed to colour by hand. The parts are cut exactly to size from the individual coloured patches and frayed at the edges. The patches are then pieced together to complete the puzzle. Once this is done, a finish is masterfully applied to selected pieces.