



ardecora

Milano

La Magia della Sicilia

by Zimmer + Rohde



1 Palermo 485 | 2 Noto 493 | 3 Siracusa 892

ardecora

Milano

La Magia della Sicilia

Sizilien – ein Paradies auf Erden, das die Schönheit, Vielfalt und die Gegensätze Italiens bilderbuchhaft an einem Ort zu vereinen weiß. Imposant trifft hier städtische Noblesse auf unberührte Natur, schmiegen sich idyllische Küsten um pulsierende Vulkane, durchweht von warmen Wüstenwinden. Der Schmelztiegel metropolier Lebendigkeit, kulturellen Reichtums und anfassbarer Ursprünglichkeit, findet seine kreative Übersetzung in 17 Dessins der neuen ARDECORA Kollektion – La Magia della Sicilia. Geprägt von atemberaubender Handwerklichkeit, raffinierten Materialeffekten und anspruchsvollen Stickerein.

Sicily – an earthly paradise that brings the beauty, diversity and contrasts of Italy together in one picturesque location. This is where urban nobility impressively collides with untouched nature and pulsating volcanoes nestle themselves between idyllic coastlines, all while being caressed by warm desert winds. This melting pot of metropolitan vibrancy, cultural richness and tangible originality is creatively translated into the 17 patterns that make up the new ARDECORA collection – La Magia della Sicilia. Characterised by breath-taking craftsmanship, refined material effects and sophisticated embroidery.

La Sicile, un paradis sur terre, qui réussit la sublime synthèse de toute la beauté, de la diversité et des contrastes de l'Italie. L'île offre un impressionnant mélange de noblesse citadine et de nature sauvage, où des côtes paradisiaques se blottissent contre des volcans ardents, dans des paysages balayés par les vents chauds du désert. Le melting-pot de l'effervescence des villes, de la richesse culturelle et d'une histoire très ancienne aussi tangible s'exprime avec créativité dans les 17 dessins de la nouvelle collection ARDECORA – La Magia della Sicilia, empreinte d'un savoir-faire textile artisanal inouï, d'effets de matière raffinés et de broderies sophistiquées.

Sicilia: un paradiso terrestre. Qui la bellezza, la molteplicità e le contraddizioni dell'Italia si incontrano dando vita a un'atmosfera da cartolina. Nobiltà di città e natura incontaminata si fondono con imponenza; le coste idilliache, accarezzate da caldi venti desertici, abbracciano i vulcani pulsanti. Questo vivace crogiolo metropolitano, la ricchezza culturale e la palpabile veracità si traducono creativamente nei 17 motivi della nuova collezione ARDECORA, La Magia della Sicilia. Una collezione che si distingue per un'artigianalità mozzafiato, materiali dai raffinati effetti e ricami ricercati.

by Zimmer + Rohde





1 Palermo 979 | 2 Infinity Plus 658



Scirocco

Inspired by a Sicilian carpet motif, this fabric is used to a masterpiece in artisan craftsmanship.

The embroidery, consisting of jute and rayon yarns, was made in a multitude of different stitching techniques on the noble Jacquard ground made of linen, viscose and polyester brought.



1 Scirocco 895 | 2 Sciracusa 983 | 3 Etna 887





1 Siracusa 892 | 2 Siracusa 786 | 3 Siracusa 983 | 4 Siracusa 584 | 5 Siracusa 184 | 6 Infinity Plus 717
 Left Page: 1 Lipari 784 | 2 Stromboli 788 | 3 Siracusa 892 | 4 Siracusa 786



1 Eolie 991 | 2 Stromboli 985 | 3 Scirocco 992 | 4 Etna 992
Right Page: 1 Sabbia 686





1

2



Left Page: 1 Lipari 596 | 2 Siracusa 584

Noto

A highly elegant and artfully embroidered stripe motif for a particularly stylish interior. NOTO's handcrafted, elaborate embroidery is simply captivating. The alternating material effect creates a refined contrast between shimmering satin, subtle lurex threads and the fine cotton background.





1 Sabbia 984 | 2 Siracusa 892 | 3 Magico 885 | 4 Siracusa 584



1

2

3

LA SICILE
La grande histoire des guerres de Vendée
Patrick Buisson



Left Page: 1 Stromboli 998 | 2 Erci 996 | 3 Siracusa 983

Stromboli

The modern pattern of this decorative fabric with a soft, pleasant surface creates a clear graphic effect. This contemporary Jacquard develops an interesting relief due to its combination of various weave effects.



1 Magico 665
Right Page: 1 Pantelleria 887 | 2 Passion 436



1

2



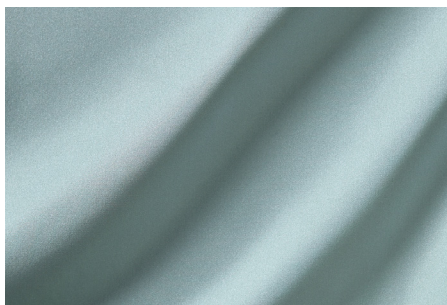


1 Etna 994 | 2 Panarea 495 | 3 Monsoon 995
Left Page : 1 Scirocco 884 | 2 Erci 894 | 3 Siracusa 983 | 4 Etna 997

La Magia della Sicilia



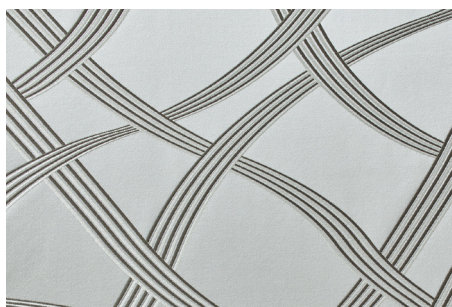
Etna | 15445
6 Colorways
93 % CV, 7 % PES



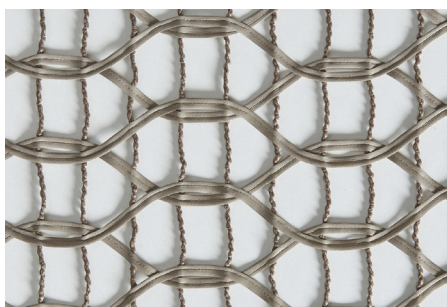
Magico | 15446
7 Colorways
100 % SE



Lipari | 15447
5 Colorways
77 % PES, 23 % CO



Stromboli | 15451
5 Colorways
42 % CV, 34 % CO, 24 % PES



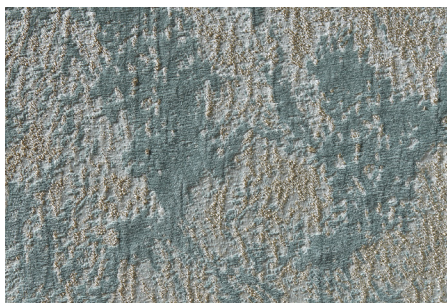
Pantelleria | 15452
3 Colorways
68 % PES, 30 % PVC, 2 % PU



Eolie | 15453
4 Colorways
100 % PES, Application: 100 % PES
Embroidery: 55 % CV, 40 % CO,
5 % MTF



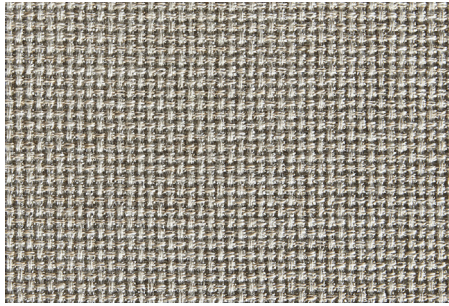
Mori | 15457
4 Colorways
10 % CO, Embroidery: 79 % CV,
11 % PES, 10 % MTF



Sabbia | 15458
5 Colorways
45 % PES, 45 % CV, 10 % PA



Siracusa | 15459
10 Colorways
100 % PES, Embroidery: 78 % CV,
22 % PES



Erici | 15448

4 Colorways
67 % PES, 15 % PAN,
14 % CO, 4 % LI



Panarea | 15449

4 Colorways
45 % LI, 40 % CO, 15 % PES



Scirocco | 15450

5 Colorways
62 % CV, 25 % LI, 13 % PES,
Embroidery: 70 % CV, 30 % JU



Salina | 15454

4 Colorways
100 % PES



Palermo | 15455

5 Colorways
75 % CV, 25 % PES



Noto | 15456

5 Colorways
100 % CO, Application: 100 % PES
Embroidery: 55 % CV, 40 % Co,
5 % MTF



Catania | 15460

3 Colorways
100 % PES, Application: 60 % CLY,
25 % WO, 15 % PES



Monreale | 15461

3 Colorways
100 % PES



for worldwide contacts please visit
www.zimmer-rohde.com/contacts