

TR AVERS

NEW YORK



WAYFARER | Spring 2024

A celebration of eccentricity, WAYFARER is a joyful, exuberant collection inspired by the fantastical lives of the travelling performers and groups that toured the world throughout the 19th and 20th centuries. Lavish ornamental embroideries meet textured upholsterys, whilst mermaids swim alongside a

menagerie of tiger pelts that hang in panels and slink onto rich velvets. Cultural motifs create a visual feast of pattern play as contemporary, fanciful designs layer with ethnic and archival textiles in vibrant colour palettes, creating an eclectic and bohemian collection adaptable for city or country living.

BY ZIMMER + ROHDE

Anna | 44204

Inspired by the decadent costumes worn by Anna Pavlova at the Ballets Russes, ANNA is a multifaceted embroidery that perfectly balances matte and lustre. Depth and texture are built by layering detailed stitching and delicately looped cording onto a woven stripe.

Decoration, fabric width: 137 cm, 3 colours,
100% CO, embroidery: 90% CV, 5% PES, 5% CO



Press release: Travers | Spring 2024
press@zimmer-rohde.com | www.zimmer-rohde.com

BY ZIMMER + ROHDE

Collonade | 44205

A striking trellis design referencing classical architecture, COLLONADE is a large-scale design that makes a statement. Hand-embroidered French knots decorate the curves of Palladian-inspired crewel work, softening the structure, adding a flair of craftsmanship and giving a contemporary edge to an otherwise traditional design language.

Decoration, fabric width: 140 cm, 4 colours,
ground: 100% LI, embroidery: 100% PES



Press release: Travers | Spring 2024
press@zimmer-rohde.com | www.zimmer-rohde.com

BY ZIMMER + ROHDE

Carnival Stripe | 44206

A dynamic and spirited print inspired by the hand-painted motifs used to decorate the tents and trailers of travelling performers, CARNIVAL STRIPE embraces a playful composition and energetic colour palette. Printed on a cotton-linen base, the design is suitable for both drapery and upholstery, and makes an uplifting addition to any scheme.

Decoration, fabric width: 144 cm, 4 colours,
90% CO, 10% LI



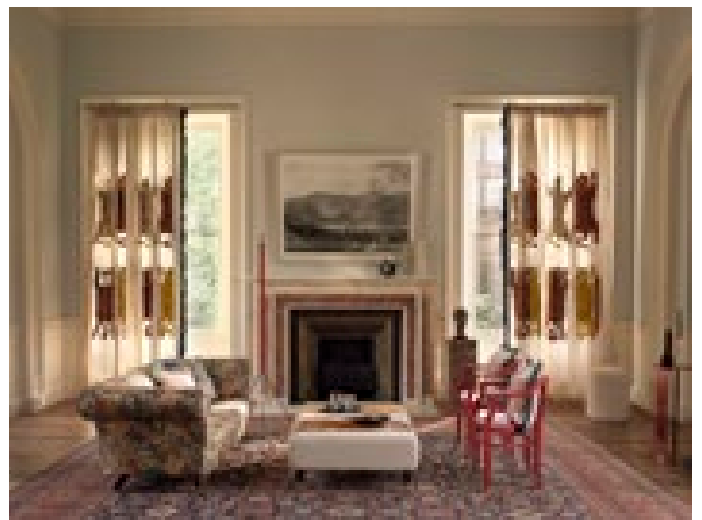
Press release: Travers | Spring 2024
press@zimmer-rohde.com | www.zimmer-rohde.com

BY ZIMMER + ROHDE

Fiesta | 44207

An explosive floral design in which traditional oriental patterns harmonise with centuries-old Jacobean motifs. FIESTA celebrates a fusion of cultures, combining layers of vibrant colour and form with subtle textures to create a detailed, invigorating design.

Decoration, fabric width: 159 cm, 4 colours,
100% LI



Press release: Travers | Spring 2024
press@zimmer-rohde.com | www.zimmer-rohde.com

BY ZIMMER + ROHDE

Charlotte | 44208

CHARLOTTE is a screen-printed design whose charming appeal lies in the deft translation of the original antique woodblock and harmonious balance of the half-drop repeat. Sprightly botanical motifs echo the details of the 'Anna' embroidery, across four pretty colourways which perfectly maintain the authenticity of the design.

Decoration, fabric width: 141 cm, 4 colours,
100% LI



Press release: Travers | Spring 2024
press@zimmer-rohde.com | www.zimmer-rohde.com

BY ZIMMER + ROHDE

Folklore | 44209

A stunning and unique archival design, FOLKLORE depicts Odyssean mermaids swimming gracefully amongst coral reefs on the ocean floor, whilst gentle waves ebb and flow around them. Printed on a lustrous linen satin, the design takes on an ethereal glow as the light bounces from the surface, like sunlight on water.

Decoration, fabric width: 150 cm, 3 colours,
100% LI



Press release: Travers | Spring 2024
press@zimmer-rohde.com | www.zimmer-rohde.com

BY ZIMMER + ROHDE

Parade Stripe | 44210

The small-scale offset ribbons of colour in PARADE STRIPE make it an easy-to-use and versatile design. Reminiscent of the movement of pattern and light on antique carousel rides, this fabric is suitable for both drapery and upholstery, and is available in six clear colour stories.

Upholstery, fabric width: 146 cm, 6 colours,
48% CV, 31% CO, 21% LI



Press release: Travers | Spring 2024
press@zimmer-rohde.com | www.zimmer-rohde.com

BY ZIMMER + ROHDE

Oncilla | 44211

A rich cotton-pile upholstery velvet available in three natural colourways depicting the unique patterning of the eponymous wild cat, ONCILLA is a unique take on traditional animal-skin designs. An extra pile in the cloth, which is cut longer than the ground, gives an interesting fil coupé effect.

Upholstery, fabric width: 141 cm, 3 colours,
51% CO, 49% CV



Empress Glazed Linen | 44212

A refined French linen with a lustrous glazed finish produced using traditional mechanical techniques, EMPRESS GLAZED LINEN is a classic fabric that perfectly bounces light whilst maintaining a classically full-bodied handle.

Available in a palette of ten considered tones, which range from subtle, delicate neutrals to stronger, energetic highlights.

Decoration, fabric width: 150 cm, 10 colours,
100% LI



Press release: Travers | Spring 2024
press@zimmer-rohde.com | www.zimmer-rohde.com

BY ZIMMER + ROHDE

Panthera | 44213

A significant emblem in East Asian iconography, PANTHERA reinterprets stylised motifs of tiger and leopard pelts through large-scale, heavily textured, hand-guided embroidery on linen. Tigers symbolise protection and good luck, whilst leopards are considered a symbol of strength and power. Unique and dramatic yet convivial, through its contemporary interpretation 'Panthera' adds a splash of drama that is still rooted in tradition.

Upholstery, fabric width: 140 cm, 1 colour,
55% LI, 45% CO, embroidery: 100% PAN



Press release: Travers | Spring 2024
press@zimmer-rohde.com | www.zimmer-rohde.com

BY ZIMMER + ROHDE

Oakley | 44214

A lively cloth woven in a hopsack structure with a melange weft that carries colour effortlessly across the cloth, OAKLEY achieves over 80,000 rubs making it a perfect choice for upholstery. In spite of its performance, it maintains a soft, drapeable handle. Available in an adaptable range of 12 colours inspired by the painted tones of antebellum architecture.

Upholstery, fabric width: 140 cm, 12 colours,
30% LI, 30% CO, 18% WO, 12% CV, 10% PES



Press release: Travers | Spring 2024
press@zimmer-rohde.com | www.zimmer-rohde.com

BY ZIMMER + ROHDE