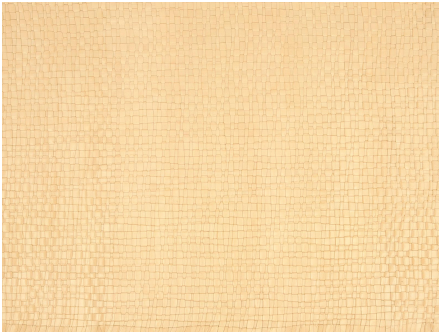




ZIMMER+ROHDE








Product data sheet

An attractive, striking leather network, with interwoven leather bands of varying width. This exquisite leather weave with its special characteristic irregularity looks hand woven and requires particularly elaborate preparation and production processes. The hides are cut into irregular bands for warp and weft. A special cutting method is used for the weft. In order to create as few lengths as possible the hide is stretched on a cutting machine and cut into bands in a spiral fashion. Special looms are used for drawing-in the long leather bands and putting them under tension. During this process it is important to avoid twisting the leather bands, both during mounting on the loom and weaving. Subsequently the network is attached to a cotton backing in order to ensure sufficient stability for processing.

Zimmer + Rohde

Network

ARTICLENUMBER	10398812
COLLECTION	Classical Beauty Sunday Morning
NUMBER OF COLORS	4
CATEGORY	Fabrics
MOTIVE	Uni
FABRIC WIDTH	71 cm
EFFECTIVE WIDTH	-
WEIGHT	1010 g/m ²
MATERIAL	100% Cotton Coating: 100% Leather
MARTINDALE	55000
CARE INSTRUCTIONS	    
ADDITIONAL INFORMATION	Special Leather Care
PROPERTIES / USAGE	-
ACOUSTIC PROTECTION	-
LIGHT FASTNESS (EN ISO 105-B02)	-
DYEING METHOD	piece dyed
PILLING (EN ISO 12945-2)	-
RAPPORTWIDTH	-
RAPPORTHEIGHT	-
MANUFACTURING METHOD	-