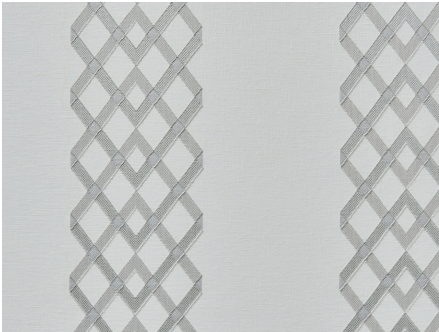




ZIMMER+ROHDE






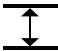


## Product data sheet

AMELIA is the newest addition to our Travers sheer category. Woven on a special wide width loom in Turkey, the striped diamond fil coupe is shown railroaded as a vertical stripe. This lightweight, airy sheer has a casual elegance making it a perfect addition to both city and country. Offered in ivory, grey, natural and sky, AMELIA has been finished to give it an extraordinarily soft touch.

Travers

### Amelia

|                                 |  |
|---------------------------------|--|
| ARTICLENUMBER                   | 44178992   |
| COLLECTION                      | Tropica  |
| NUMBER OF COLORS                | 4  |
| CATEGORY                        | Fabrics  |
| MOTIVE                          | Graphic  |
| FABRIC WIDTH                    | 300 cm   |
| EFFECTIVE WIDTH                 | -  |
| WEIGHT                          | 122 g/m <sup>2</sup>   |
| MATERIAL                        | 54% Polyester, 36% Flax (linen), 10% Viscose   |
| MARTINDALE                      | -  |
| CARE INSTRUCTIONS               |      |
| ADDITIONAL INFORMATION          | -  |
| PROPERTIES / USAGE              | Room high   washable<br>  |
| ACOUSTIC PROTECTION             | -  |
| LIGHT FASTNESS (EN ISO 105-B02) | 4 - 5  |
| DYEING METHOD                   | yarn dyed  |
| PILLING (EN ISO 12945-2)        | -  |
| RAPPORTWIDTH                    | 42 cm  |
| RAPPORTHEIGHT                   | 10 cm  |
| MANUFACTURING METHOD            | -  |