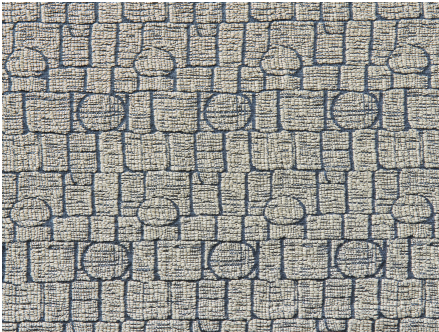




ZIMMER+ROHDE








Product data sheet

Three things come together in this article that would probably never have found each other otherwise: the medieval Boutis technique interpreted as a jacquard of linen and cotton, the arrangement of a print designed by Al Eklund in 1958 showing birdcages, and the legend of an opera singer who died in a shipwreck in 1784 and who is said to still eke out an existence as a ghost on the uninhabited island of Rosevear southwest of England. ROSEVEAR is therefore a true conversation piece. But especially because this handcrafted quality with subtle two-tone coloring is made in a traditional Italian GOTS-certified weaving mill.

Hodsoll McKenzie

Rosevear

| | |
|---------------------------------|---|
| ARTICLENUMBER | 21278584 |
| COLLECTION | Utopia |
| NUMBER OF COLORS | 5 |
| CATEGORY | Fabrics |
| MOTIVE | Graphic |
| FABRIC WIDTH | 150 cm |
| EFFECTIVE WIDTH | - |
| WEIGHT | 412 g/m ² |
| MATERIAL | 75% Flax (linen), 25% Cotton |
| MARTINDALE | - |
| CARE INSTRUCTIONS |      |
| ADDITIONAL INFORMATION | - |
| PROPERTIES / USAGE | - |
| ACOUSTIC PROTECTION | - |
| LIGHT FASTNESS (EN ISO 105-B02) | 5 |
| DYEING METHOD | yarn dyed |
| PILLING (EN ISO 12945-2) | - |
| RAPPORTWIDTH | 9 cm |
| RAPPORTHEIGHT | 10 cm |
| MANUFACTURING METHOD | - |