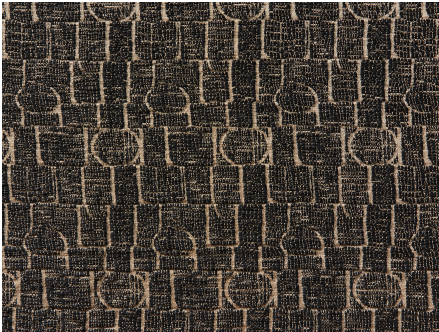




ZIMMER+ROHDE








## Product data sheet

Three things come together in this article that would probably never have found each other otherwise: the medieval Boutis technique interpreted as a jacquard of linen and cotton, the arrangement of a print designed by Al Eklund in 1958 showing birdcages, and the legend of an opera singer who died in a shipwreck in 1784 and who is said to still eke out an existence as a ghost on the uninhabited island of Rosevear southwest of England. ROSEVEAR is therefore a true conversation piece. But especially because this handcrafted quality with subtle two-tone coloring is made in a traditional Italian GOTS-certified weaving mill.

Hodsoll McKenzie

### Rosevear

ARTICLENUMBER	21278985
COLLECTION	Utopia
NUMBER OF COLORS	5
CATEGORY	Fabrics
MOTIVE	Graphic
FABRIC WIDTH	150 cm
EFFECTIVE WIDTH	-
WEIGHT	412 g/m <sup>2</sup>
MATERIAL	75% Flax (linen), 25% Cotton
MARTINDALE	-
CARE INSTRUCTIONS	    
ADDITIONAL INFORMATION	-
PROPERTIES / USAGE	-
ACOUSTIC PROTECTION	-
LIGHT FASTNESS (EN ISO 105-B02)	5
DYEING METHOD	yarn dyed
PILLING (EN ISO 12945-2)	-
RAPPORTWIDTH	9 cm
RAPPORTHEIGHT	10 cm
MANUFACTURING METHOD	-