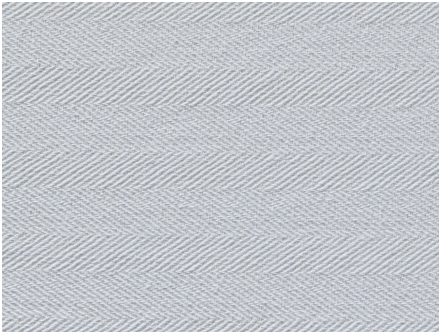




ZIMMER+ROHDE






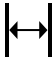



Product data sheet

Halfway from Hawaii to Australia lies the small island of Howland, whose little fame is mainly due to the aviation pioneer Amelia Earhart who in 1937 wanted to be the first person to circumnavigate the world at its greatest extent. On Howland, she made a stopover – and remained lost forever. In the collection, HOWLAND is one of the few items with synthetic content. A mixture of recycled cotton and recycled polyester combined with linen was the deciding factor. The result is a dense yet soft herringbone that looks natural in earthy tones and almost sporty and functional when you choose a bright color.

Hodsoll McKenzie

Howland RE

ARTICLENUMBER	21281990
COLLECTION	Utopia
NUMBER OF COLORS	9
CATEGORY	Fabrics
MOTIVE	Small-scale pattern
FABRIC WIDTH	270 cm
EFFECTIVE WIDTH	-
WEIGHT	332 g/m ²
MATERIAL	52% Cotton (recycled), 34% Flax (linen), 10% Polyester (recycled), 4% Other fibers
MARTINDALE	-
CARE INSTRUCTIONS	    
ADDITIONAL INFORMATION	floor length recommended
PROPERTIES / USAGE	Not washable  
ACOUSTIC PROTECTION	-
LIGHT FASTNESS (EN ISO 105-B02)	4
DYEING METHOD	yarn dyed
PILLING (EN ISO 12945-2)	-
RAPPORTWIDTH	-
RAPPORTHEIGHT	-
MANUFACTURING METHOD	-