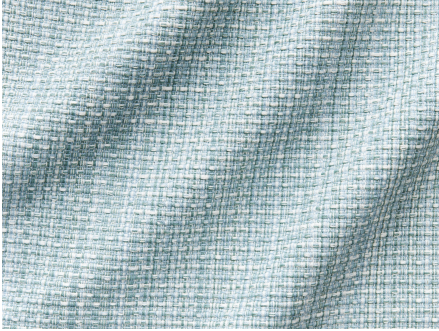




ZIMMER+ROHDE







## Product data sheet

LONGWOOD WEAVE is the textured upholstery plain you have been waiting for! Three different yarn colors are carefully dyed and then warped in a very specific manner to create an end result that, though very intentional, appears wholly organic. It has a dry, all natural cotton composition, and is available in nine colors that layer beautifully throughout the Travers portfolio.

Travers

### Longwood Weave

ARTICLENUMBER	44189563
COLLECTION	GARDEN CLUB
NUMBER OF COLORS	8
CATEGORY	Fabrics
MOTIVE	Small-scale pattern
FABRIC WIDTH	137 cm
EFFECTIVE WIDTH	-
WEIGHT	494 g/m <sup>2</sup>
MATERIAL	100% Cotton
MARTINDALE	25000
CARE INSTRUCTIONS	    
ADDITIONAL INFORMATION	-
PROPERTIES / USAGE	-
ACOUSTIC PROTECTION	-
LIGHT FASTNESS (EN ISO 105-B02)	4 - 5
DYEING METHOD	yarn dyed
PILLING (EN ISO 12945-2)	-
RAPPORTWIDTH	-
RAPPORHEIGHT	-
MANUFACTURING METHOD	-