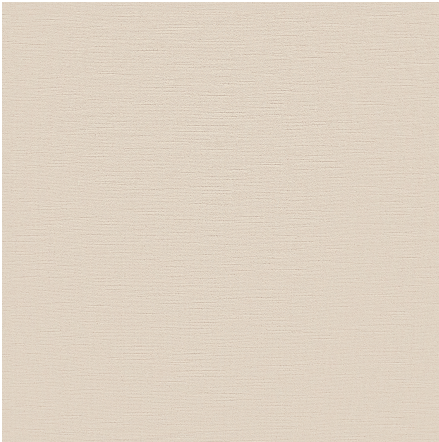




ZIMMER+ROHDE








## Product data sheet

SHELDON is a pure-linen velour with a naturally dry touch. The fine flame structure underscores the natural linen look and provides the surface with texture and a relief effect. Available in 10 attractive on-trend colorways, from beige to rosé.

Travers

### Sheldon

ARTICLENUMBER	44201990
COLLECTION	Voyager
NUMBER OF COLORS	10
CATEGORY	Fabrics
MOTIVE	Uni
FABRIC WIDTH	140 cm
EFFECTIVE WIDTH	-
WEIGHT	576 g/m <sup>2</sup>
MATERIAL	Ground: 100% Cotton Pile: 100% Flax (linen)
MARTINDALE	35000
CARE INSTRUCTIONS	    
ADDITIONAL INFORMATION	-
PROPERTIES / USAGE	-
ACOUSTIC PROTECTION	-
LIGHT FASTNESS (EN ISO 105-B02)	4 - 5
DYEING METHOD	piece dyed
PILLING (EN ISO 12945-2)	-
RAPPORTWIDTH	-
RAPPORTHEIGHT	-
MANUFACTURING METHOD	Velours