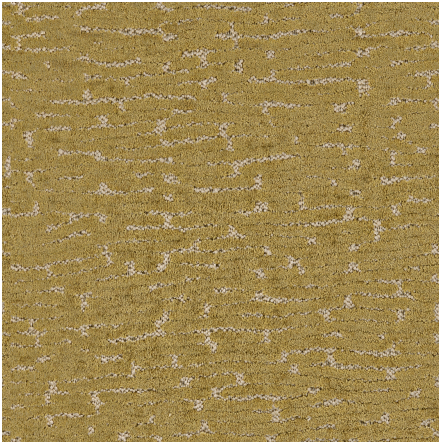




ZIMMER+ROHDE








Product data sheet

ARLES is a velvet woven in Belgium with a weft thread of bouclé yarn. Its stone-washed finishing roughens the pile to lend a shabby-chic look.

Etamine

Arles

ARTICLENUMBER	19612175
COLLECTION	Heures d'été
NUMBER OF COLORS	10
CATEGORY	Fabrics
MOTIVE	Graphic
FABRIC WIDTH	130 cm
EFFECTIVE WIDTH	-
WEIGHT	953 g/m ²
MATERIAL	40% Viscose, 22% Acrylic, 15% Cotton, 14% Polyester, 9% Wool
MARTINDALE	100000
CARE INSTRUCTIONS	    
ADDITIONAL INFORMATION	-
PROPERTIES / USAGE	-
ACOUSTIC PROTECTION	-
LIGHT FASTNESS (EN ISO 105-B02)	5
DYEING METHOD	yarn dyed
PILLING (EN ISO 12945-2)	4
RAPPORTWIDTH	32 cm
RAPPORTHEIGHT	37 cm
MANUFACTURING METHOD	Velours