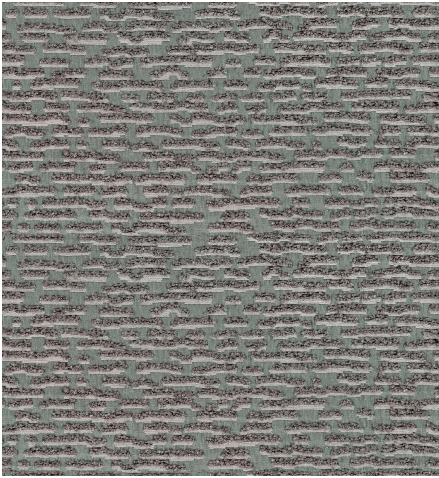




ZIMMER+ROHDE








## Product data sheet

The special charm of this unusual upholstery fabric lies in the interplay of contrasts, The three-dimensional allover design was woven with voluminous bouclé yarn on an elegantly shimmering satin warp. Color-contrasting shadows in linen fabric create another layer and intensify the charming relief effect of the expressive jacquard. The eloquent character of the design makes RYTHM perfect as an eye-catching statement, ideal for smaller upholstered surfaces such as chairs or stools. But it really comes into its own, unfolding its full effect, on larger, soft upholstered furniture.

Zimmer + Rohde

### Rythm

ARTICLENUMBER	10961693
COLLECTION	Soul Spaces
NUMBER OF COLORS	15
CATEGORY	Fabrics
MOTIVE	Stripes
FABRIC WIDTH	140 cm
EFFECTIVE WIDTH	-
WEIGHT	814 g/m <sup>2</sup>
MATERIAL	35% Acrylic, 20% Cotton, 18% Viscose, 17% Polyester, 10% Polyamide
MARTINDALE	40000
CARE INSTRUCTIONS	    
ADDITIONAL INFORMATION	-
PROPERTIES / USAGE	-
ACOUSTIC PROTECTION	-
LIGHT FASTNESS (EN ISO 105-B02)	5
DYEING METHOD	yarn dyed
PILLING (EN ISO 12945-2)	4
RAPPORTWIDTH	35 cm
RAPPORTHEIGHT	40 cm
MANUFACTURING METHOD	Velours