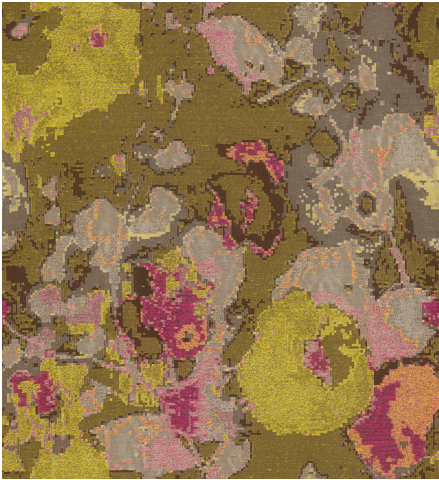




ZIMMER+ROHDE




Product data sheet

We delve deep into the opulence and lushness of a secret garden. Opulent vines and flowers intertwine in SECRET GARDEN, creating a feast of colors and textures. The special cashmere finish provides the softly flowing décor fabric with its irresistible feel as well as creating soft and harmonious color transitions.

This sensory explosion is available in four harmonious colorways.

Zimmer + Rohde

Secret Garden

ARTICLENUMBER	10948144
COLLECTION	Soul Spaces
NUMBER OF COLORS	4
CATEGORY	Fabrics
MOTIVE	Floral
FABRIC WIDTH	140 cm
EFFECTIVE WIDTH	-
WEIGHT	300 g/m ²
MATERIAL	43% Flax (linen), 35% Viscose, 22% Polyester
MARTINDALE	-
CARE INSTRUCTIONS	
ADDITIONAL INFORMATION	-
PROPERTIES / USAGE	-
ACOUSTIC PROTECTION	-
LIGHT FASTNESS (EN ISO 105-B02)	5
DYEING METHOD	yarn dyed
PILLING (EN ISO 12945-2)	-
RAPPORTWIDTH	70 cm
RAPPORTHEIGHT	78 cm
MANUFACTURING METHOD	-