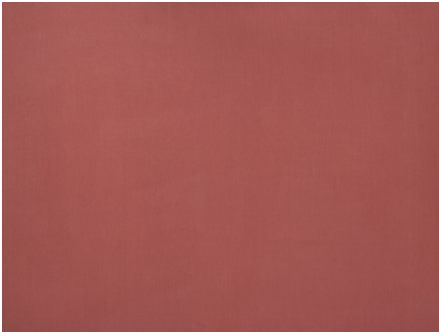




ZIMMER+ROHDE









Product data sheet

Luna is a new addition to the multicolour collection of basic fabrics by Zimmer + Rohde. The pure cotton fabric has a slightly grainy weave and its surface is brushed during the final stage of production. The fabric's soft drape makes it suitable for use as a decorative material, while its sturdiness makes it equally well-suited to being used for upholstery. Luna is available in 63 different colours and can be used for a variety of applications.

Zimmer + Rohde

Luna

ARTICLENUMBER	10684345
COLLECTION	Selection
NUMBER OF COLORS	45
CATEGORY	Fabrics
MOTIVE	Uni
FABRIC WIDTH	140 cm
EFFECTIVE WIDTH	-
WEIGHT	308 g/m ²
MATERIAL	100% Cotton
MARTINDALE	30000
CARE INSTRUCTIONS	    
ADDITIONAL INFORMATION	-
PROPERTIES / USAGE	washable 
ACOUSTIC PROTECTION	-
LIGHT FASTNESS (EN ISO 105-B02)	4
DYEING METHOD	piece dyed
PILLING (EN ISO 12945-2)	4
RAPPORTWIDTH	-
RAPPORTHEIGHT	-
MANUFACTURING METHOD	-