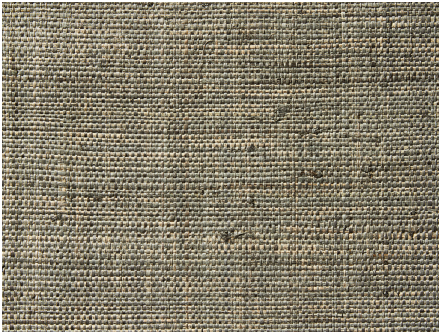




ZIMMER+ROHDE





Product data sheet

Even the process of producing this extraordinary single-colour fabric tells a special story. It all begins with natural fibres from the raffia palm native to Madagascar, which are woven in Southeast Asia on traditional handlooms. The fragile weave gains its individual colours in a piece-dyeing process, and is laminated onto a strong backing material as a final step. This manual process produces a lush, natural appearance, underscored by the combination of the irregularities in the dye and texture of the raffia fibre and the way it is processed. The result is an exclusive wall design, whose texture and narrative lend any room a particular sense of depth.

Zimmer + Rohde

Raffia Weave

ARTICLENUMBER	50068984
COLLECTION	Zimmer + Rohde - F20
NUMBER OF COLORS	5
CATEGORY	Wallcoverings
MOTIVE	Uni
FABRIC WIDTH	90 cm
EFFECTIVE WIDTH	-
WEIGHT	533 g/m ²
MARTINDALE	-
CARE INSTRUCTIONS	    
ADDITIONAL INFORMATION	-
PROPERTIES / USAGE	-
ACOUSTIC PROTECTION	-
LIGHT FASTNESS (EN ISO 105-B02)	-
DYEING METHOD	-
PILLING (EN ISO 12945-2)	-
RAPPORTWIDTH	-
RAPPORTHEIGHT	-
MANUFACTURING METHOD	-