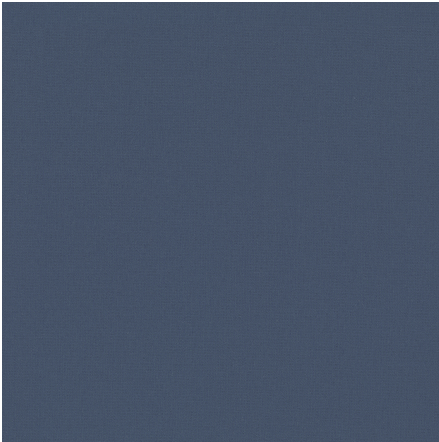




ZIMMER+ROHDE



Product data sheet

The innovative blackout curtain boasts contemporary simplicity and a modern color palette. The double-face fabric, which can be used from both sides, darkens the room 100% with complete window coverage thanks to a special invisible coating. The front and reverse sides are identical in terms of their finely and densely woven surface but vary slightly in color tone. This sophisticated two-sided effect opens up various design options for individual color concepts. NOCTURNE is ideally suited for window treatments, room-dividing solutions, or glass façades where the fabric is visible from both sides.

Thanks to its outstanding sound absorbance, it also noticeably improves the room's acoustics. In addition, the universally applicable fabric is flame-retardant and thus equally suitable for private and public spaces.

Zimmer + Rohde

Nocturne FR

ARTICLENUMBER

10995555

COLLECTION

Zimmer + Rohde - F24

NUMBER OF COLORS

15

CATEGORY

Fabrics

MOTIVE

Uni

FABRIC WIDTH

300 cm

EFFECTIVE WIDTH

-

WEIGHT

265 g/m²

MATERIAL

100% Polyester (Fire resistant)

MARTINDALE

-

CARE INSTRUCTIONS



ADDITIONAL INFORMATION

-

PROPERTIES / USAGE

Room high | washable



ACOUSTIC PROTECTION

-

LIGHT FASTNESS (EN ISO 105-B02)

4

DYEING METHOD

piece dyed

PILLING (EN ISO 12945-2)

-

RAPPORTWIDTH

-

RAPPORTHEIGHT

-

MANUFACTURING METHOD

-