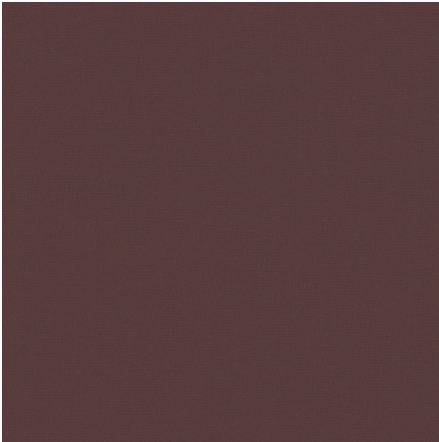




ZIMMER+ROHDE









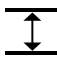
## Product data sheet

The innovative blackout curtain boasts contemporary simplicity and a modern color palette. The double-face fabric, which can be used from both sides, darkens the room 100% with complete window coverage thanks to a special invisible coating. The front and reverse sides are identical in terms of their finely and densely woven surface but vary slightly in color tone. This sophisticated two-sided effect opens up various design options for individual color concepts. NOCTURNE is ideally suited for window treatments, room-dividing solutions, or glass façades where the fabric is visible from both sides.

Thanks to its outstanding sound absorbance, it also noticeably improves the room's acoustics. In addition, the universally applicable fabric is flame-retardant and thus equally suitable for private and public spaces.

Zimmer + Rohde

### Nocturne FR

ARTICLENUMBER	10995346
COLLECTION	Zimmer + Rohde - F24
NUMBER OF COLORS	15
CATEGORY	Fabrics
MOTIVE	Uni
FABRIC WIDTH	300 cm
EFFECTIVE WIDTH	-
WEIGHT	265 g/m <sup>2</sup>
MATERIAL	100% Polyester (Fire resistant)
MARTINDALE	-
CARE INSTRUCTIONS	    
ADDITIONAL INFORMATION	-
PROPERTIES / USAGE	Room high   washable   
ACOUSTIC PROTECTION	-
LIGHT FASTNESS (EN ISO 105-B02)	4
DYEING METHOD	piece dyed
PILLING (EN ISO 12945-2)	-
RAPPORTWIDTH	-
RAPPORTHEIGHT	-
MANUFACTURING METHOD	-