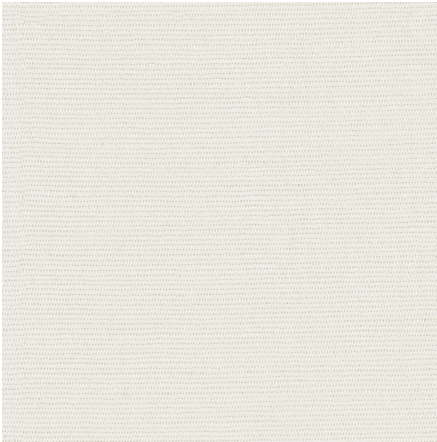




ZIMMER+ROHDE



Product data sheet






The laid-back upholstery fabric, with its fine chenille texture, boasts a natural look teamed with a rich color palette. The comfortable and hard-wearing structured weave works its magic on larger, softly upholstered pieces of furniture, exuding a cozy, feel-good atmosphere.

The surface is extremely pleasant to the touch and gives every piece of furniture a cozy feel – an invitation to pure comfort.

ELIAN embodies a contemporary lifestyle, thanks not only to its laid-back feel. With 52% BCI cotton and 24% jute, ELIAN also contributes to environmentally friendly design.

Zimmer + Rohde

Elian

ARTICLENUMBER	10986990
COLLECTION	Zimmer + Rohde - F24
NUMBER OF COLORS	20
CATEGORY	Fabrics
MOTIVE	Uni
FABRIC WIDTH	150 cm
EFFECTIVE WIDTH	-
WEIGHT	584 g/m ²
MATERIAL	52% Cotton, 24% Viscose, 24% Jute
MARTINDALE	45000
CARE INSTRUCTIONS	    
ADDITIONAL INFORMATION	-
PROPERTIES / USAGE	-
ACOUSTIC PROTECTION	-
LIGHT FASTNESS (EN ISO 105-B02)	4 - 5
DYEING METHOD	piece dyed
PILLING (EN ISO 12945-2)	4
RAPPORTWIDTH	-
RAPPORTHEIGHT	-
MANUFACTURING METHOD	-