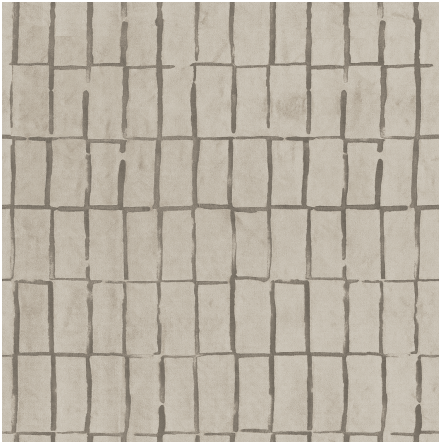




ZIMMER+ROHDE



## Product data sheet

The simplicity of this rectangular grid design paired with a metallic pigment print and richly shimmering velour surface imbues MILETUS with a modern and luxurious dimension. MILETUS was the first known city whose layout was based on a grid structure and serves as the namesake of this sumptuous décor and upholstery fabric. A restrained design as a statement of minimalist elegance.

Zimmer + Rohde

### Miletus

|                   |                         |
|-------------------|-------------------------|
| ARTICLENUMBER     | 10979882                |
| COLLECTION        | Zimmer + Rohde - F24    |
| NUMBER OF COLORS  | 3                       |
| CATEGORY          | Fabrics                 |
| MOTIVE            | Checks                  |
| FABRIC WIDTH      | 140 cm                  |
| EFFECTIVE WIDTH   | -                       |
| WEIGHT            | 454 g/m <sup>2</sup>    |
| MATERIAL          | 64% Viscose, 36% Cotton |
| MARTINDALE        | 100000                  |
| CARE INSTRUCTIONS |                         |



|                                 |       |
|---------------------------------|-------|
| ADDITIONAL INFORMATION          | -     |
| PROPERTIES / USAGE              | -     |
| ACOUSTIC PROTECTION             | -     |
| LIGHT FASTNESS (EN ISO 105-B02) | 5     |
| DYEING METHOD                   | -     |
| PILLING (EN ISO 12945-2)        | -     |
| RAPPORTWIDTH                    | 44 cm |
| RAPPORTHEIGHT                   | 26 cm |
| MANUFACTURING METHOD            | -     |