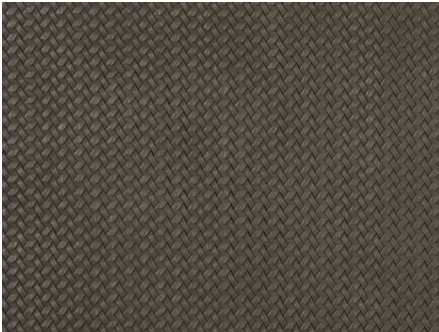




ZIMMER+ROHDE









Product data sheet

Thanks to its refined mesh structure, Costa has a more 'grown-up' appearance than its synthetic leather counterpart Havana, which also makes it far more versatile. However, both types of fabric are equally easy to incorporate into interior design.

Zimmer + Rohde

Costa

ARTICLENUMBER	10747997
COLLECTION	Destinations
NUMBER OF COLORS	15
CATEGORY	Fabrics
MOTIVE	Uni
FABRIC WIDTH	137 cm
EFFECTIVE WIDTH	-
WEIGHT	949 g/m ²
MATERIAL	100% Polyester Coating: 95% Polyvinyl chloride, 5% Polyurethan
MARTINDALE	35000
CARE INSTRUCTIONS	    
ADDITIONAL INFORMATION	-
PROPERTIES / USAGE	Not washable 
ACOUSTIC PROTECTION	-
LIGHT FASTNESS (EN ISO 105-B02)	6
DYEING METHOD	piece dyed
PILLING (EN ISO 12945-2)	-
RAPPORTWIDTH	-
RAPPORTHEIGHT	-
MANUFACTURING METHOD	-