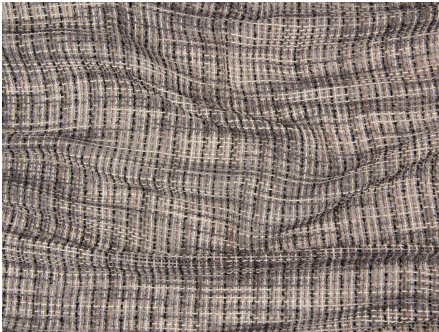







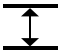


ZIMMER+ROHDE



Zimmer + Rohde

Borneo

ARTICLENUMBER	10758986
COLLECTION	Destinations
NUMBER OF COLORS	3
CATEGORY	Fabrics
MOTIVE	Checks
FABRIC WIDTH	313 cm
EFFECTIVE WIDTH	-
WEIGHT	473 g/m²
MATERIAL	100% Polyester
MARTINDALE	-
CARE INSTRUCTIONS	    
ADDITIONAL INFORMATION	Recommend puddle on the floor
PROPERTIES / USAGE	Room high washable
	 300 _{cm} PLUS
ACOUSTIC PROTECTION	-
LIGHT FASTNESS (EN ISO 105-B02)	-
DYEING METHOD	yarn dyed
PILLING (EN ISO 12945-2)	-
RAPPORTWIDTH	-
RAPPORTHEIGHT	-
MANUFACTURING METHOD	-

Product data sheet

This latticework fabric with a handmade look consists of multicoloured moiré yarns and impresses with a surprising transparent effect when it is held against the light. This lends an elegant heaviness to the room's atmosphere while keeping the area at the window relatively bright. We recommend selecting a cut that extends down to the floor of the room.