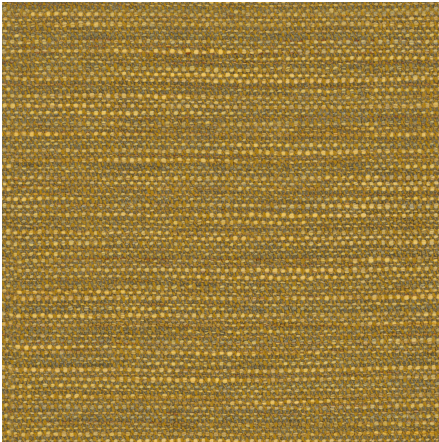




ZIMMER+ROHDE



## Product data sheet

This casual, textured fabric is soft and sumptuous. Its stunning mélange design

is created by twisting flammé yarns in a variety of ways.






This process gives the comfortable upholstery fabric its vibrant color effect.

The color palette is inspired by the interplay of natural surfaces, including warm neutrals such as raffia and cocoa, reddish earth hues, and more intense tones such as Indian yellow and acacia green.

This durable upholstery fabric is also well suited for upholstering round furniture shapes.

Zimmer + Rohde

## Cuddle Up

ARTICLENUMBER	10998185
COLLECTION	Mosaïque
NUMBER OF COLORS	12
CATEGORY	Fabrics
MOTIVE	Small-scale pattern
FABRIC WIDTH	150 cm
EFFECTIVE WIDTH	145 cm
WEIGHT	714 g/m <sup>2</sup>
MATERIAL	70% Acrylic, 15% Fleece wool, 8% Polyester, 7% Flax (linen)
MARTINDALE	40000
CARE INSTRUCTIONS	    
ADDITIONAL INFORMATION	-
PROPERTIES / USAGE	-
ACOUSTIC PROTECTION	-
LIGHT FASTNESS (EN ISO 105-B02)	5
DYEING METHOD	yarn dyed
PILLING (EN ISO 12945-2)	4
RAPPORTWIDTH	-
RAPPORTHEIGHT	-
MANUFACTURING METHOD	-