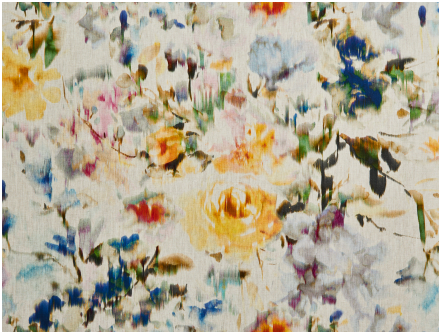




ZIMMER+ROHDE







## Product data sheet

Somewhere between realism and decoration – LE BOUQUET attests to the new flowery harmonies of Etamine: modern and feminine. Although the design represents flowers, colour predominates and the petals mix for a look that is abstract, with modern charm. The design, digitally printed on linen, sets the colours free, and every nuance that makes it up testifies to the savoir-faire of Etamine. The colours of the buds are inspired by the flower market in Saint-Tropez and pay homage to the fauvist palette of Henri Matisse. The powder-white and mauve shades call to mind the freshness and memories of spring; the multicoloured and coral variations are saturated with the light and heat of summer. For the sake of elegance, we have chosen to print on a linen cultivated in the north of France where the climate is favourable, guaranteeing a fibre length of at least 80 cm. We have opted for an Airo finish, which gives the product a soft feel and a fabulous drape – just how we like our linen today.

Etamine

### Le bouquet

ARTICLENUMBER	19574156
COLLECTION	LA COULEUR DES FLEURS
NUMBER OF COLORS	4
CATEGORY	Fabrics
MOTIVE	Floral
FABRIC WIDTH	140 cm
EFFECTIVE WIDTH	135 cm
WEIGHT	149 g/m <sup>2</sup>
MATERIAL	100% Flax (linen)
MARTINDALE	-
CARE INSTRUCTIONS	    
ADDITIONAL INFORMATION	-
PROPERTIES / USAGE	-
ACOUSTIC PROTECTION	-
LIGHT FASTNESS (EN ISO 105-B02)	4
DYEING METHOD	-
PILLING (EN ISO 12945-2)	-
RAPPORTWIDTH	-
RAPPORTHEIGHT	74 cm
MANUFACTURING METHOD	-