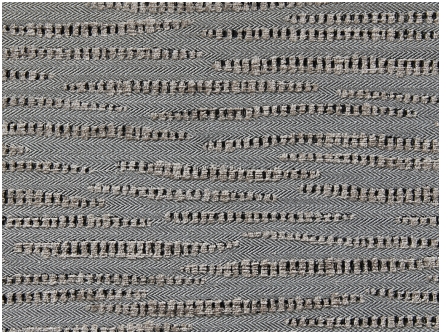




ZIMMER+ROHDE






## Product data sheet

In the early 18th century, Queen Caroline had numerous elms planted in Hyde Park, which were later integrated into the dome of Joseph Paxton's Crystal Palace. CAROLINE ELM upholstery fabric evokes these trees thanks to its bark-like pattern. This pattern was achieved by wefting a soft chenille yarn through a long float stitch. The resulting stripes interrupt a classic, two-tone herringbone and in some colours create contrasting patterns that almost look like animals. Others, however, conjure up an earthy, natural look.

Hodsoll McKenzie

### Caroline Elm

ARTICLENUMBER	21259989
COLLECTION	1851
NUMBER OF COLORS	6
CATEGORY	Fabrics
MOTIVE	Stripes
FABRIC WIDTH	138 cm
EFFECTIVE WIDTH	-
WEIGHT	480 g/m <sup>2</sup>
MATERIAL	45% Viscose, 36% Cotton, 19% Polyester
MARTINDALE	29000
CARE INSTRUCTIONS	    
ADDITIONAL INFORMATION	-
PROPERTIES / USAGE	-
ACOUSTIC PROTECTION	-
LIGHT FASTNESS (EN ISO 105-B02)	5
DYEING METHOD	yarn dyed
PILLING (EN ISO 12945-2)	4
RAPPORTWIDTH	34 cm
RAPPORTHEIGHT	21 cm
MANUFACTURING METHOD	-