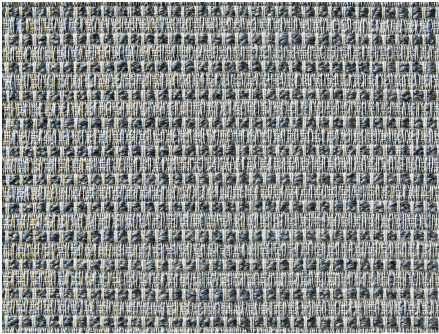




ZIMMER+ROHDE



Product data sheet

In 1868, British artist and founder of the Pre-Raphaelites, William Holman Hunt, painted a portrait of his wife Fanny. The painting comes alive not only due to the intense expression in Fanny's face, but also the naturalistic and impressive interpretation of her clothing. She is wrapped in a traditional Indian paisley cloth in a deep crimson colour. The voluminous decorative fabric HOLMAN HUNT has a thin linen warp which holds twisted wool weft yarns in a loose float stitch to convey an enveloping cosiness as well as the melancholic elegance of this serious work, especially in its crimson colouring.

Hodsoll McKenzie

Holman Hunt

ARTICLENUMBER	21270593
COLLECTION	1851
NUMBER OF COLORS	4
CATEGORY	Fabrics
MOTIVE	Uni
FABRIC WIDTH	152 cm
EFFECTIVE WIDTH	-
WEIGHT	345 g/m ²
MATERIAL	38% Flax (linen), 28% Wool, 20% Polyester, 10% Viscose, 4% Polyamide
MARTINDALE	-
CARE INSTRUCTIONS	    
ADDITIONAL INFORMATION	Recommend puddle on the floor
PROPERTIES / USAGE	-
ACOUSTIC PROTECTION	-
LIGHT FASTNESS (EN ISO 105-B02)	5
DYEING METHOD	yarn dyed
PILLING (EN ISO 12945-2)	-
RAPPORTWIDTH	1 cm
RAPPORTHEIGHT	2 cm
MANUFACTURING METHOD	-