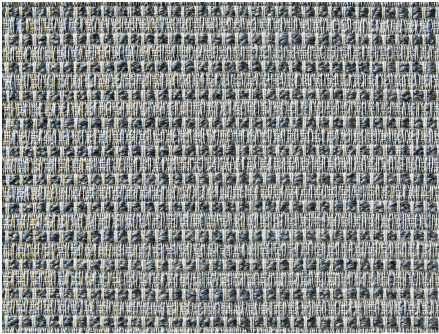




ZIMMER+ROHDE



Product data sheet

In 1868, British artist and founder of the Pre-Raphaelites, William Holman Hunt, painted a portrait of his wife Fanny. The painting comes alive not only due to the intense expression in Fanny's face, but also the naturalistic and impressive interpretation of her clothing. She is wrapped in a traditional Indian paisley cloth in a deep crimson colour. The voluminous decorative fabric HOLMAN HUNT has a thin linen warp which holds twisted wool weft yarns in a loose float stitch to convey an enveloping cosiness as well as the melancholic elegance of this serious work, especially in its crimson colouring.

Hodsoll McKenzie

Holman Hunt

| | |
|---------------------------------|--|
| ARTICLENUMBER | 21270593 |
| COLLECTION | 1851 |
| NUMBER OF COLORS | 4 |
| CATEGORY | Fabrics |
| MOTIVE | Uni |
| FABRIC WIDTH | 152 cm |
| EFFECTIVE WIDTH | - |
| WEIGHT | 345 g/m ² |
| MATERIAL | 38% Flax (linen), 28% Wool, 20% Polyester, 10% Viscose, 4% Polyamide |
| MARTINDALE | - |
| CARE INSTRUCTIONS |      |
| ADDITIONAL INFORMATION | Recommend puddle on the floor |
| PROPERTIES / USAGE | - |
| ACOUSTIC PROTECTION | - |
| LIGHT FASTNESS (EN ISO 105-B02) | 5 |
| DYEING METHOD | yarn dyed |
| PILLING (EN ISO 12945-2) | - |
| RAPPORTWIDTH | 1 cm |
| RAPPORTHEIGHT | 2 cm |
| MANUFACTURING METHOD | - |