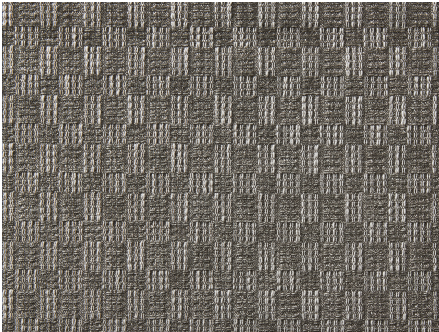




ZIMMER+ROHDE








Product data sheet

This classic upholstery fabric has a varying checkerboard chenille design which perfectly complements many of the more decorative qualities in the collection. ZAMMA is named for the African board game that many believe is an ancestor to the modern game of checkers. It is available in seven colours, which include a wide range of neutrals, aqua and blue.

Travers

Zamma

ARTICLENUMBER	44162995
COLLECTION	Out of Africa
NUMBER OF COLORS	6
CATEGORY	Fabrics
MOTIVE	Small-scale pattern
FABRIC WIDTH	140 cm
EFFECTIVE WIDTH	-
WEIGHT	471 g/m ²
MATERIAL	40% Cotton, 40% Viscose, 20% Polyester
MARTINDALE	33000
CARE INSTRUCTIONS	    
ADDITIONAL INFORMATION	-
PROPERTIES / USAGE	-
ACOUSTIC PROTECTION	-
LIGHT FASTNESS (EN ISO 105-B02)	4
DYEING METHOD	yarn dyed
PILLING (EN ISO 12945-2)	4
RAPPORTWIDTH	4 cm
RAPPORTHEIGHT	4 cm
MANUFACTURING METHOD	-