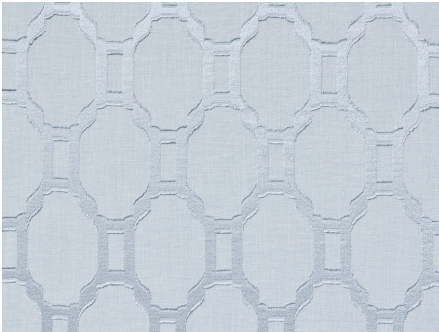




ZIMMER+ROHDE






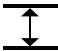


Product data sheet

OLMSTEAD is an octagonal trellis aptly named for Frederick Law Olmstead, the landscape architect responsible for the inception of Central Park. This double-width fil-coupé trellis is first fully woven before being individually piece dyed. Woven on a mixed warp, each fibre takes colour differently, making the melange effect in the base more apparent. Shown railroaded, OLMSTEAD has a soft finishing and is offered in a crisp white, creamy ivory, soft sky blue and dove grey.

Travers

Olmstead

ARTICLENUMBER	44168563
COLLECTION	Central Park
NUMBER OF COLORS	5
CATEGORY	Fabrics
MOTIVE	Ornamental
FABRIC WIDTH	298 cm
EFFECTIVE WIDTH	-
WEIGHT	173 g/m²
MATERIAL	75% Polyester, 15% Flax (linen), 8% Viscose, 2% Lyocell
MARTINDALE	-
CARE INSTRUCTIONS	    
ADDITIONAL INFORMATION	-
PROPERTIES / USAGE	Room high washable 
ACOUSTIC PROTECTION	-
LIGHT FASTNESS (EN ISO 105-B02)	4
DYEING METHOD	yarn dyed
PILLING (EN ISO 12945-2)	-
RAPPORTWIDTH	14 cm
RAPPORTHEIGHT	23 cm
MANUFACTURING METHOD	-