

# TROPICA





# Overview

SANIBEL	04
ANANAS EMBROIDERY	05
SAINT KITTS	06
FLORA PRINT	07
PALACIO VELVET	08
JACOBAN VINE	09
KEY WEST	10
AMELIA	12
SANDY LANE	13
TROPICA	14

**TRIVERS**  
NEW YORK



# Tropica

TRAVERS

NEW YORK

TROPICA is a breath of fresh island air, inspired by the layered style of the West Indies at the height of the 19th and 20th centuries. This English style effortlessly combined practicality with elegance. The airy, sunny climates offered a tropical environment where local materials, such as rattan, bamboo and teak were woven into interior spaces to enhance the exotic patterns which illustrated indigenous flora and fauna.

The hero of the collection is TROPICA, a bestselling Travers print first launched in 1997 that is newly revived from the archives. The collection is named for this celebrated print, composed of uniquely scaled tropical fruit and trees, originally hand painted with ink and tempera watercolor techniques. FLORA PRINT is another archival design with West Indies flair that stays true to our Travers heritage with its whimsical floral interpretations. SAINT KITTS and AMELIA are soft flowing sheers that will add lightness to any room.

This collection takes us back to a simpler era free from the everyday hustle of technology; where you could sit back and laze away the afternoon.





# Sanibel



44171-546



44171-755



44171-843



44171-964

Upon discovering this print, a vision of cattails swaying in the breeze on Sanibel Island comes to mind. A lightweight linen cloth was specially selected to capture the movement of the cattails. Printed with the latest in digital technology, each of the four colors has an unexpected, subtle accent color that creates unique combinations. SANIBEL has a soft easy hand, and is finished to give added dimension and stability.

OVERVIEW

TRAVERS

NEW YORK

NAME <b>Sanibel</b>
ARTICLE NUMBER <b>44171</b>
CATEGORY <b>Decoration</b>

FABRIC WIDTH <b>150 cm</b>
MATERIAL <b>100 % LI</b>
MARTINDALE <b>10.000</b>

PROPERTIES
CARE INSTRUCTIONS 





# Ananas Embroidery

TRAVERS

NEW YORK

NAME

**Ananas Embroidery**

ARTICLE NUMBER

**44172**

CATEGORY

**Decoration**



44172-425



44172-557



44172-586



44172-893

FABRIC WIDTH

**140 cm**

MATERIAL

**Ground: 59 % CO, 41 % LI  
Embroidery: 100 % CV**

MARTINDALE

PROPERTIES



CARE INSTRUCTIONS



Traditionally recognized as a welcoming symbol, the pineapple conveys a sense of hospitality and warmth. Originally drawn by hand, ANANAS EMBROIDERY incorporates two vibrant viscose yarns on a blended cloth. The beauty of this embroidery is in the stitch technique. It uses the same yarn at varied thicknesses to create an illusion of depth and color. This playful embroidery comes in four sophisticated colors that perfectly capture the spirit of the West Indies.



# Saint Kitts

SAINT KITTS is a relaxed, all-natural transparent drapery with an airy quality inspired by its namesake island in the West Indies. Hand-guided stitching forms the pintuck squares that are applied to the linen ground by skilled craftsmen in India. Available in a serene range of Ivory, Cream, Natural and Aqua, this delicate sheer is extremely soft to the touch.



44173-553



44173-881



44173-990



44173-992



44173-994

## TRAVERS

NEW YORK

NAME <b>Saint Kitts</b>
ARTICLE NUMBER <b>44173</b>
CATEGORY <b>Decoration</b>

FABRIC WIDTH <b>137 cm</b>
MATERIAL <b>100 % LI</b>
MARTINDALE

PROPERTIES 
CARE INSTRUCTIONS 





# Flora Print

TRAVERS

NEW YORK



44174-355



44174-377



44174-654



44174-898

NAME <b>Flora Print</b>
ARTICLE NUMBER <b>44174</b>
CATEGORY <b>Decoration</b>

FABRIC WIDTH <b>147 cm</b>
MATERIAL <b>90 % CO, 10 % LI</b>
MARTINDALE

PROPERTIES 
CARE INSTRUCTIONS 

With its whimsical floral interpretations, FLORA PRINT was deserving of a revival! Printed in England, the original fabric was beautifully preserved using a combination of traditional techniques and new advancements in digital printing. Best of all, we produced the original multicolor documentary colorway along with three additional new color combinations. This exotic print is sure to be a showstopper.





# Palacio Velvet

TRAVERS

NEW YORK

NAME

**Palacio Velvet**

ARTICLE NUMBER

**44175**

CATEGORY

**Upholstery**

FABRIC WIDTH

**140 cm**

MATERIAL

**Ground: 100 % CO  
Flor: 100 % CO**

MARTINDALE

**25.000**

PROPERTIES

CARE INSTRUCTIONS



44175-493



44175-564



44175-852

Intricate details are woven into this chic velvet inspired by the interior of the famous Palacio de los Capitanes Generales in Havana. An all-natural cotton composition gives PALACIO VELVET a drier look and feel. Engineered for a wider continuous velvet area, the pile stands straighter than with most velvet. A lampas technique was adapted to preserve the sketched look of the medallion using three alternating weft colors to give added shade and dimension.

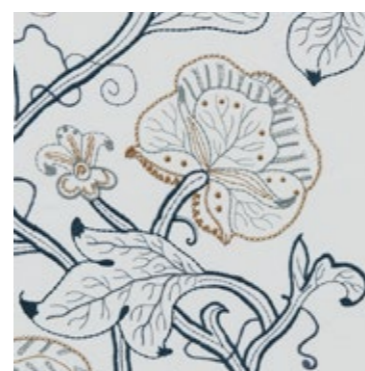




# Jacobean Vine

TRAVERS

NEW YORK



44176-585



44176-786



44176-997

NAME <b>Jacobean Vine</b>
ARTICLE NUMBER <b>44176</b>
CATEGORY <b>Decoration</b>

FABRIC WIDTH <b>140 cm</b>
MATERIAL <b>Ground: 80 % CO, 20 % PES Embroidery: 100 % PES</b>
MARTINDALE

PROPERTIES 
CARE INSTRUCTIONS 

A contemporary take on the classic Tree of Life design, JACOBAN VINE was inspired by an original all over document that was reworked into a detailed multicolor climbing vine. The variety of stitches used combine the artistry of the traditional movement of curves with more modern abstract angular stitching, resulting in a modern interpretation of original seventeenth century Jacobean designs.





# Key West

OVERVIEW

## TRAVERS

NEW YORK

NAME

**Key West**

ARTICLE NUMBER

**44177**

CATEGORY

**Upholstery**

FABRIC WIDTH

**140 cm**

MATERIAL

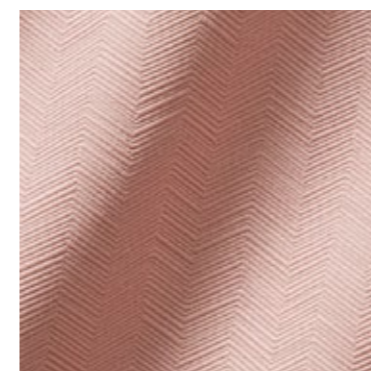
**77 % CO, 23 % PA**

MARTINDALE

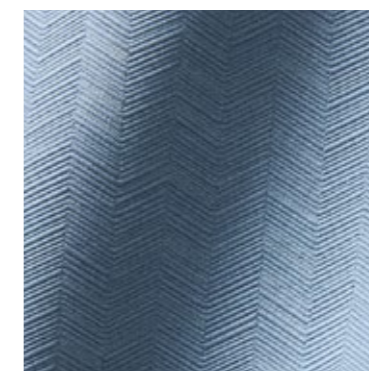
**25.000**

PROPERTIES

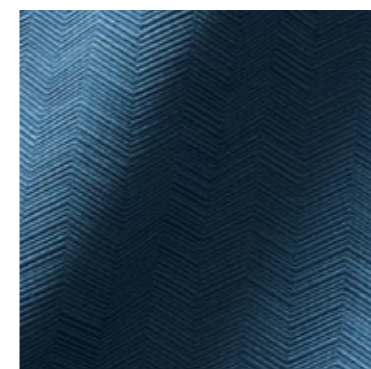
CARE INSTRUCTIONS



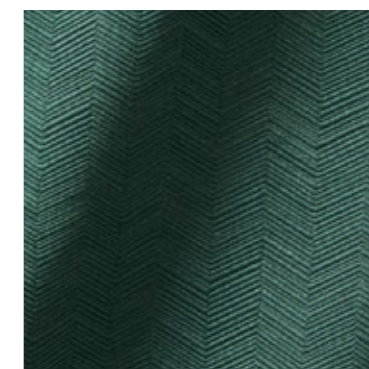
44177-443



44177-554



44177-558



44177-677

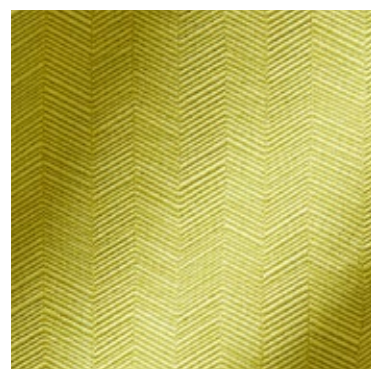
Perfect for upholstery, this irregular chevron pattern has a crisp tight weave and an elegant silky feel. Woven on a jacquard loom, its cotton weft has a raised effect giving KEY WEST a sleek hand-made look. This versatile upholstery is available in 10 stylish colors which include a range of citrus, leaf and sage greens as well as sky and ocean blues.



OVERVIEW

# TRAVERS

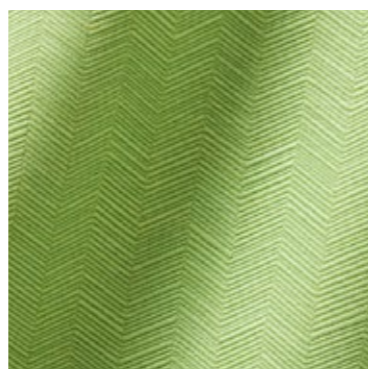
NEW YORK



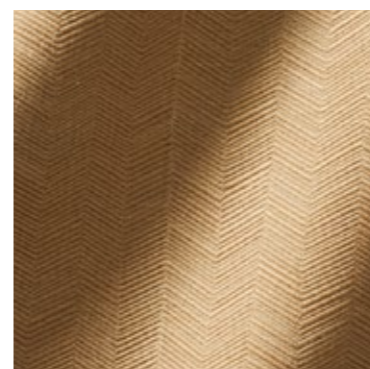
44177-714



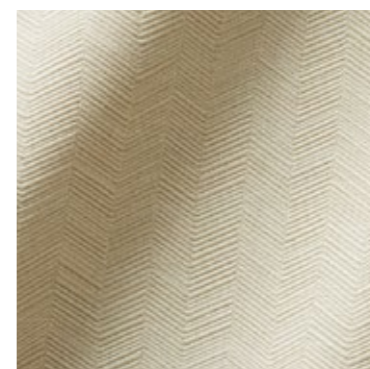
44177-763



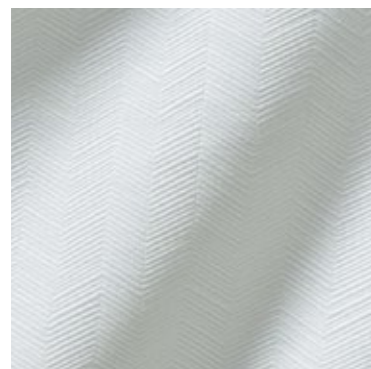
44177-775



44177-884



44177-982



44177-991

NAME <b>Key West</b>
ARTICLE NUMBER <b>44177</b>
CATEGORY <b>Upholstery</b>

FABRIC WIDTH <b>140 cm</b>
MATERIAL <b>77 % CO, 23 % PA</b>
MARTINDALE <b>25.000</b>

PROPERTIES
CARE INSTRUCTIONS 





# Amelia

## TRAVERS

NEW YORK



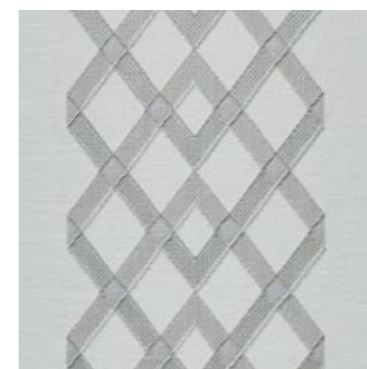
44178-593



44178-893



44178-990



44178-992

NAME <b>Amelia</b>
ARTICLE NUMBER <b>44178</b>
CATEGORY <b>Sheers</b>

FABRIC WIDTH <b>300 cm</b> ↑↓
MATERIAL <b>54 % PES, 36 % LI, 10 % CV</b>
MARTINDALE

PROPERTIES 
CARE INSTRUCTIONS 

AMELIA is the newest addition to our Travers sheer category. Woven on a special wide width loom in Turkey, the striped diamond fil coupe is shown railroaded as a vertical stripe. This lightweight, airy sheer has a casual elegance making it a perfect addition to both city and country. Offered in ivory, grey, natural and sky, AMELIA has been finished to give it an extraordinarily soft touch.





# Sandy Lane

OVERVIEW

TRAVERS

NEW YORK

NAME

**Sandy Lane**

ARTICLE NUMBER

**44179**

CATEGORY

**Decoration**

FABRIC WIDTH

**137 cm**

MATERIAL

**Ground: 60 % LI, 40 % CO  
Embroidery: 40 % CV,  
30 % PES, 30 % JU**

MARTINDALE

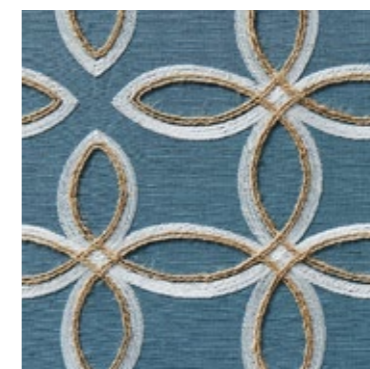
PROPERTIES



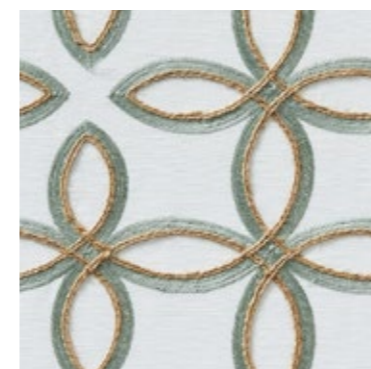
CARE INSTRUCTIONS



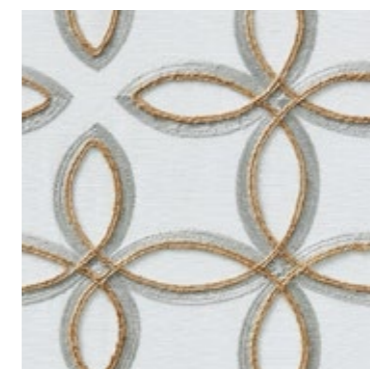
44179-485



44179-596



44179-684



44179-982

Named for the luxury beachfront resort on the Island of Barbados, SANDY LANE is a reinterpretation of the classic trellis. A harmonious balance of viscose embroidery with jute cording makes this tactile fabric very special. The jute cord used is in its most natural form and a specially engineered system was required to achieve this technique of embroidery. It has been finished for an added softness and relaxed drape.





# Tropica

OVERVIEW

TRAVERS

NEW YORK

NAME

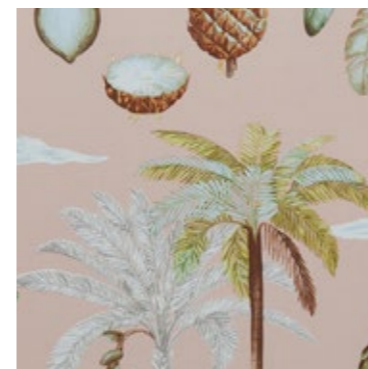
**Tropica**

ARTICLE NUMBER

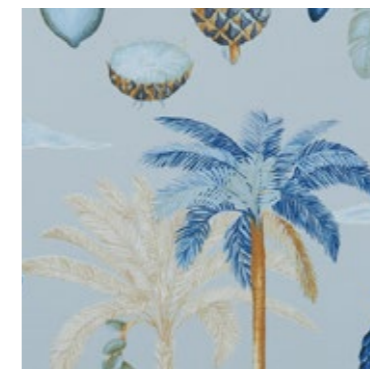
**44180**

CATEGORY

**Decoration**



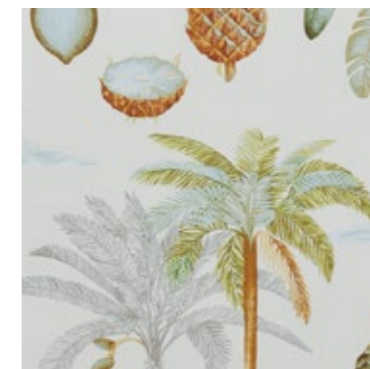
44180-474



44180-586



44180-675



44180-963

FABRIC WIDTH

**150 cm**

MATERIAL

**100 % CO**

MARTINDALE

PROPERTIES



CARE INSTRUCTIONS



The hero of the collection is TROPICA, a bestselling Travers print first launched in 1997 and for which the collection is named after. It is composed of uniquely scaled tropical fruit and trees, originally hand painted with ink and tempera watercolor techniques. TROPICA has been revived from our archives on a lightweight cotton ground, in a fresh color palette, finished with a light chintz.



# Order

COMPANY NAME

---

CUSTOMER NR

---

SHIP TO:

STREET

---

CITY / STATE / ZIP

---

ANY SPECIAL REQUEST

To submit your request: Please click the SAVE & SEND button, the PDF will be automatically attached to your email to us.

OVERVIEW

**TRAVERS**  
NEW YORK



IMPRINT

**Zimmer + Rohde GmbH**  
Zimmersmühlenweg 14-18  
61440 Oberursel/Frankfurt  
Germany

[www.zimmer-rohde.com](http://www.zimmer-rohde.com)  
[info@zimmer-rohde.com](mailto:info@zimmer-rohde.com)  
Phone +49 (0) 6171 632 02

**CEO**  
Torsten Poschardt

HR Bad Homburg, HRB 5073  
Ust-IdNr. DE 812 646 222

SAVE & SEND