

# TRAVERS

NEW YORK



## **Exotic Journeys | Collection Spring 2018**

Romantic escape is the inspiration for the *Travers* 2018 collection *Exotic Journeys*. The brilliant colour and dramatic design of far off destinations conveys a rich, alluring lifestyle. Prints, embroideries and upholstery fabrics come together to complete the story of a finished room. From the striking impact of statement ikats and suzanis to fanciful tropical florals, *Travers* 2018 is a collection for those who love the magic of travel and adventure.

BY ZIMMER + ROHDE

# TRAVERS

NEW YORK

## Collection Spring 2018 | Exotic Journeys

### Ottoman Riders | 44132

3 Colourways

100% Linen

Width: 152 cm

Usable Width: 146 cm

20.000 Martindale



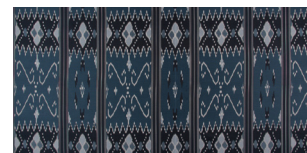
Printed on a 100% linen ground cloth from artwork developed exclusively for *Travers*, *Ottoman Riders* is a fanciful design of Ottoman era figures in a dream-like garden. The unusual and vivid colourations enhance the playful effect of this original design.

### Bukhara | 44135

4 Colourways

72% Viscose, 28% Silk

Width: 139 cm



A stunning interpretation of Middle Eastern woven textiles, this silk/viscose decorative fabric has a luxurious hand and drape. The saturated colours and Jacquard construction simulates the look of shibori tie-dyed designs creating a truly unique look for the home.

### Khiva Tapestry | 44133

3 Colourways

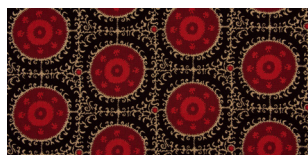
51% Cotton, 38% Viscose,

14% Acrylic, 7% Polyamide,

4% Polyester

Width: 140 cm

40.000 Martindale



The iconic suzani motif of this lightweight tapestry quality makes a graphic statement that is the very essence of exotic romance. The soft finish of the fabric allows for draped applications as well as upholstered.

### Plush Velvet | 44136

9 Colourways

Ground: 86% Cotton,

6% Polyester, 8% Modal

Flor: 100% Cotton

Width: 140 cm

100.000 Martindale



We are pleased to offer this exciting new cotton velvet to our *Travers* customers. With a special soft finish and thicker pile, cotton velvet has never looked or felt more luxurious. A slight sheen adds to the richness of this regal quality.

### Kala Stripe | 44134

4 Colourways

Ground: 100% Cotton

Embroidery: 75% Viscose,

25% Polyester

Width: 140 cm | Usable Width: 126 cm



The densely packed satin stitch gives an elegant sheen to the scroll work of this embroidered stripe. The herringbone weave of the linen ground cloth highlights the embroidery on a matte base. The four across layout is ideal for drapery applications.

### Ikat Velvet | 44137

4 Colourways

Ground: 100% Cotton

Flor: 100% Viscose

Width: 142 cm

Usable Width: 137 cm

50.000 Martindale



Inspired by a silk warp print from the *Travers* archive, the loop and cut pile epingle construction transforms a delicate classic into a sumptuous velvet. The gorgeous multicoloured stria stripe on a cotton satin ground is a standout of the collection and will be so in any room scheme.

# TRAVERS

NEW YORK

## Uzbek Embroidery | 44138

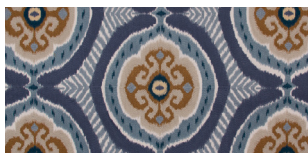
3 Colourways

Ground: 60% Linen, 40% Cotton

Embroidery: 100% Polyester

Width: 140 cm

Usable Width: 130 cm



Embroidered with a matte thread on a cotton/linen ground cloth, this full coverage design captures the exuberance of large scale suzani. With a layout designed for upholstery, *Uzbek Embroidery* is an exciting signature fabric that works perfectly for ottomans, headboards, chair backs and pillows.

## Mallory | 44139

3 Colourways

100% Linen

Width: 150 cm

Usable Width: 143 cm

20.000 Martindale



The ubiquitous ikat is interpreted here as an original watercolour design. Flowing and impressionistic in seaside colours, *Mallory* is a transitional print on a 100 % linen ground cloth.

## Shelby | 44140

8 Colourways

10% Polyester, 90% Viscose

Width: 140 cm

46.000 Martindale



Densely woven and velvet like, this new upholstery basic is the perfect accompaniment to the decorative designs in this collection. The unique chenille slub yarn brings a dynamic textural effect to the face of this enticingly tactile sofa fabric.

## Bedford Diamond | 44142

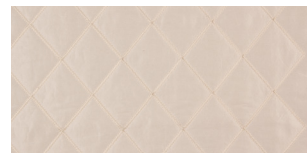
5 Colourways

Front: 88% Viscose, 12% Silk

Back: 100% Cotton

Width: 138 cm

Usable Width: 130 cm



The silk/viscose face of this oversized quilted diamond gives a refined look to a traditional bedroom fabric. The satin embroidery stitch heightens the upscale appeal and the easy to use colour palette make this quilted design suitable for any room.

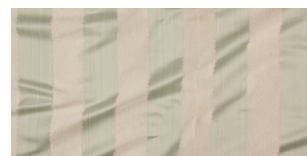
## Bella Strie | 44143

5 Colourways

70% Cotton, 22% Viscose,

8% Acrylic

Width: 137 cm



The weft crossing of this strie Jacquard fabric creates the look of an embroidered stripe. Coloured in a fresh calming palette, *Bella Strie* would make beautiful drapery or window shades.

## Palm Beach Floral | 44144

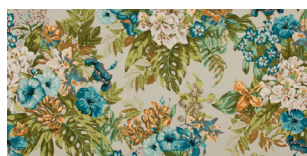
4 Colourways

100% Cotton

Width: 140 cm

Usable Width: 134 cm

17.500 Martindale



Lush tropical fauna and flowering gardens are featured in this classic screen printed design. The cotton satin ground cloth accentuates the depth of colour and provides a formal finish to the traditional look. A spectacular print, *Palm Beach Floral* is a hallmark design for the Travers brand.

# TR AVERS

NEW YORK

## Piper | 44145

6 Colourways  
50% Cotton, 25% Polyester,  
25% Viscose  
Width: 142 cm  
40.000 Martindale



With a slub warp and chenille weft, this small scale diamond upholstery fabric is an inviting go-with pattern perfect for club chairs and ottomans. The jacquard construction has a subtle shaded effect resulting in an extra layer of dimension to the pattern.

## Sagamore | 44148

7 Colourways  
52% Cotton, 48% Viscose  
Width: 140 cm  
20.000 Martindale



The custom space-dyed warp results in a look reminiscent of woven grass cloth. Specially finished to achieve an attractive touch and drape, Sagamore is a dual purpose fabric that works equally well for large scale upholstery or window treatment.

## Odisha Jungle | 44146

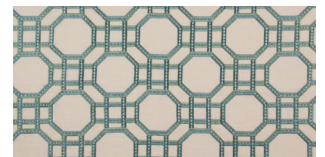
4 Colourways  
55% Linen, 45% Cotton  
Width: 154 cm  
Usable Width: 132 cm  
40.000 Martindale



Cheeky monkeys in feathered caps cavort with pineapples in this charming novelty print. Palm trees and clean colour add to the whimsy. The slightly distressed texture of the screen print brings a touch of sophistication to this lighthearted design.

## Garden Trellis | 44150

5 Colourways  
Ground: 100% Linen  
Embroidery: 77% Viscose,  
23% Polyester  
Width: 138 cm | Usable Width: 129 cm



Two-toned viscose embroidery with a calendared finish gives elegance to this timeless lattice design. Clever stitch detailing adds interest and the clean white linen ground cloth brightens the lively, handsome colourations.