



[ate'ljε]

AUTUMN/WINTER 2021

ZR

ZIMMER+ROHDE

 CLICKBOOK

OVERVIEW

INFINITY PLUS	04
ATELIER	07
OPENING	08
VENUE	09
SETUP	10
STAGE	11
STUDY	12
FAME	14
AERO NEW FR	16
VIVID RE FR	18
NOVEL RE FR	20
PENTHOUSE FR	22

ZIMMER + ROHDE



Rachel Anne Duffy

[atɛ'ljɛ]

The atelier or artist's studio can be considered a reflection of the artist and their work. Whether a sumptuous palazzo or a modest retreat, vibrant art workshop or dreamy garden: often the parallels of the artistic environment can be clearly seen in the works of art. This is where the impressions, ideas and inspirations collected from the world outside are translated in the inimitable style of the artist in their chosen medium. Light also plays a decisive role. Mediterranean vibes, with their clear and vibrant colors, are just as palpable as the softer, darker or sometimes bleak atmosphere of the north.

But the romantic notion of an artistic place of creation does not always reflect reality. Andy Warhol for example had his entire Factory completely lined with silver foil – including the windows – and produced endless streams of art.

The atelier is often not only the place of creation but also key to the self-image of the artist. It can often serve as a space in which societal rules and social hierarchies are suspended. This is where an illustrious circle of artists, actors and personalities from all walks of life come together – known in Warhol's world as "superstars".

Zimmer + Rohde's ATELIER collection is dedicated to glasswork in particular, which plays a major role in the world of art as well as in architecture. The ancient technique of glass making and its fragile results serve as an interesting contrast. Playful and sensual objects for interiors can be developed using these traditional methods. Innovative, artistic windows and facades, like those created by Gerhard Richter for Cologne Cathedral or the visionary glass façades of urban buildings like Harpa Concert Hall, designed by the artist Ólafur Elíasson.

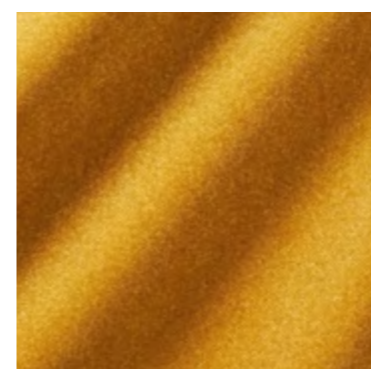
With the use of exclusive materials, exciting manufacturing methods and design that references glasswork in a variety of ways, the ATELIER collection explores the many facets and celebrates this special art form.

ZIMMER + ROHDE

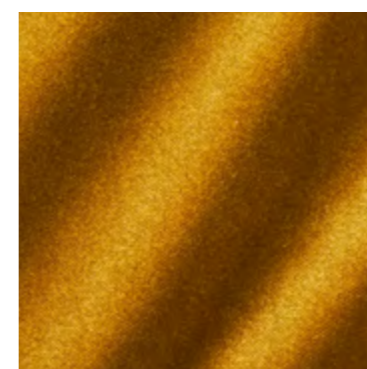


INFINITY PLUS

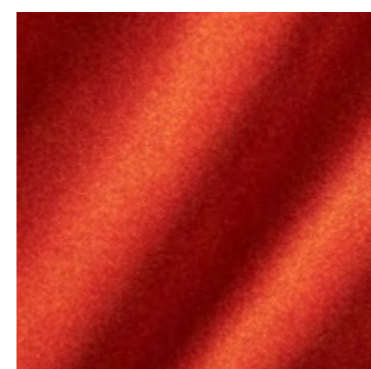
ZIMMER + ROHDE



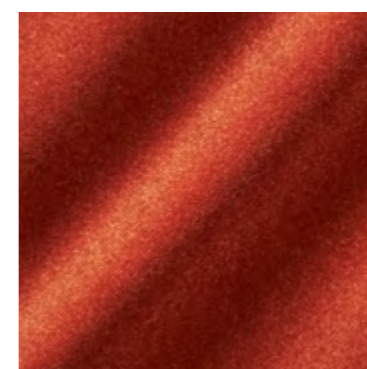
10660-184



10660-194



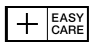





10660-224



10660-235

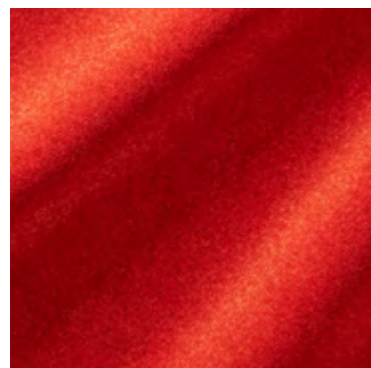
NAME Infinity Plus
ARTICLE NUMBER 10660
CATEGORY Upholstery

FABRIC WIDTH 140 cm
MATERIAL Ground: 100 % PES Pile: 100 % PAN
MARTINDALE 100.000

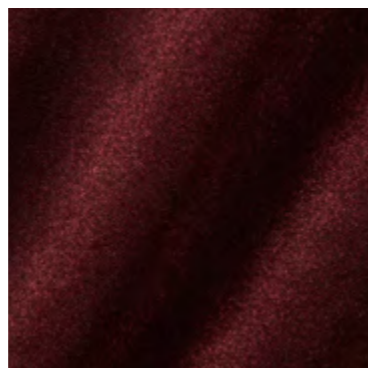
PROPERTIES  EASY CARE
CARE INSTRUCTIONS     

With INFINITY PLUS VOL II, we are building on the success of this exceptional upholstery fabric with 40 new colors. Characterized by its easy-care quality, washability, superior light and color fastness as well as high abrasion resistance, INFINITY PLUS combines the highest quality with high-tech functionality. In keeping with the contemporary Zeitgeist, we now present a total of 80 colors that leave nothing to be desired.

OVERVIEW



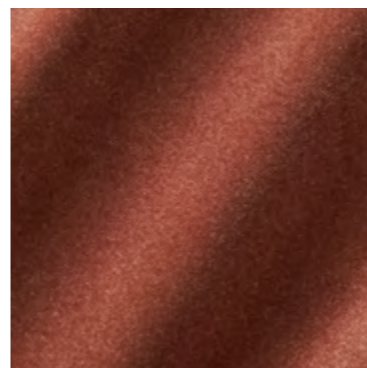
10660-324



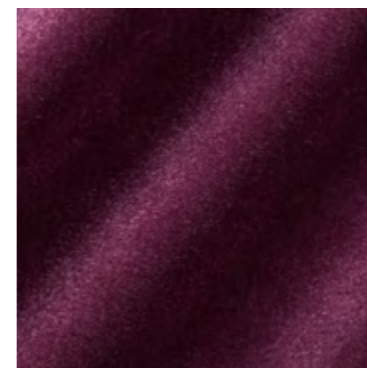
10660-349



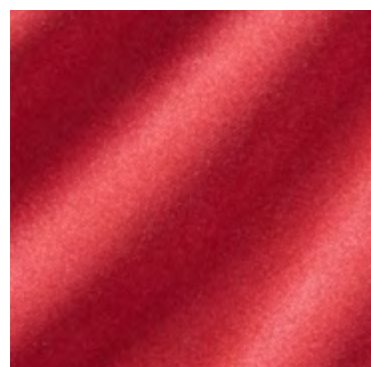
10660-385



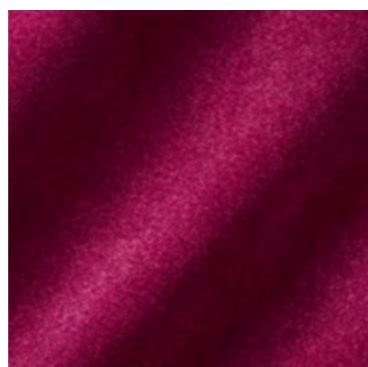
10660-434



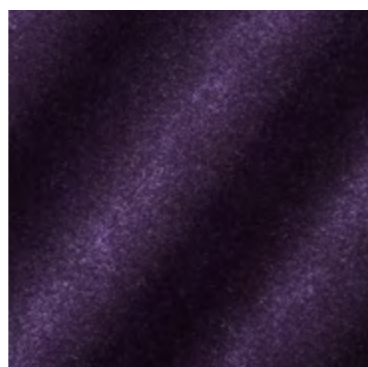
10660-436



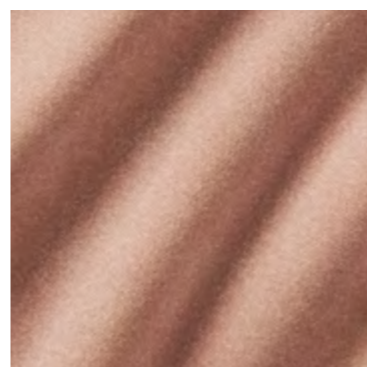
10660-444



10660-445



10660-449



10660-483



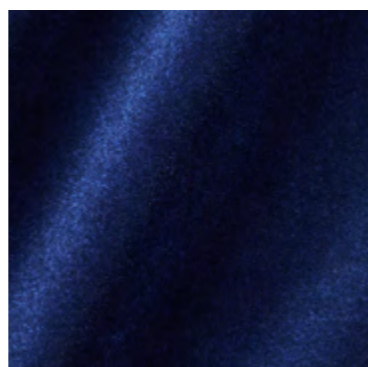
10660-494



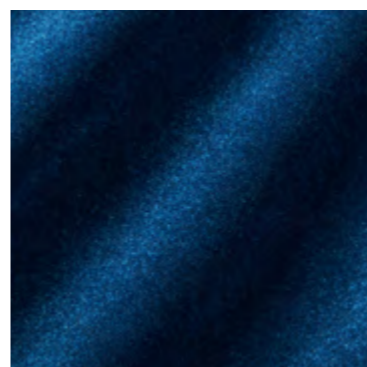
10660-554



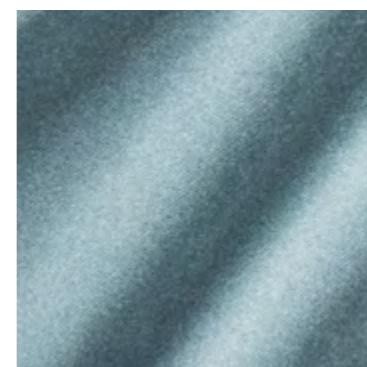
10660-555



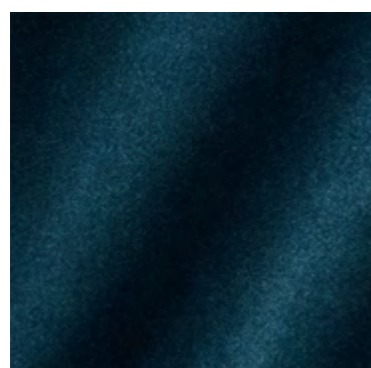
10660-557



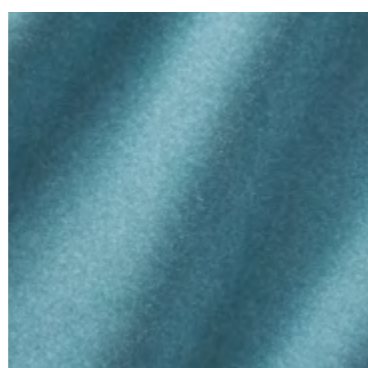
10660-568



10660-593



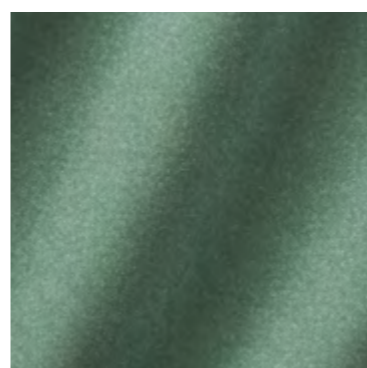
10660-657



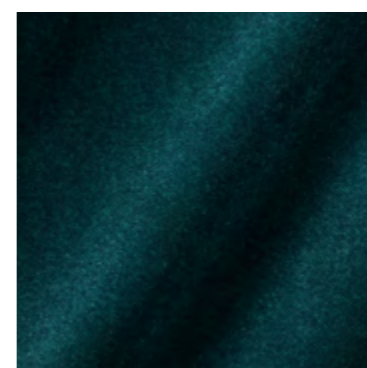
10660-663



10660-665



10660-673

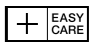






10660-675

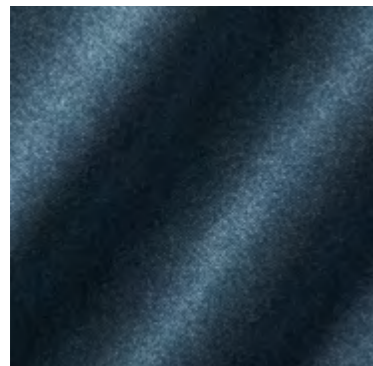
ZIMMER + ROHDE

NAME Infinity Plus
ARTICLE NUMBER 10660
CATEGORY Upholstery

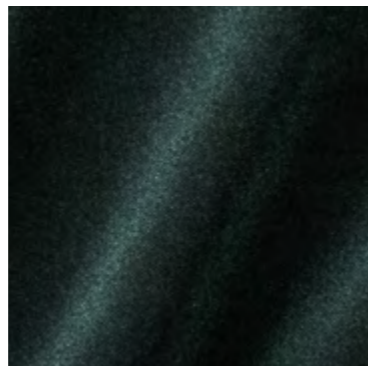
FABRIC WIDTH 140 cm
MATERIAL Ground: 100 % PES Pile: 100 % PAN
MARTINDALE 100.000

PROPERTIES 
CARE INSTRUCTIONS     

OVERVIEW



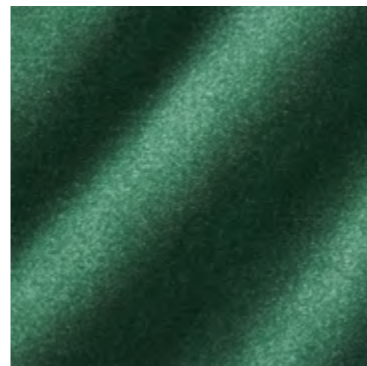
10660-677



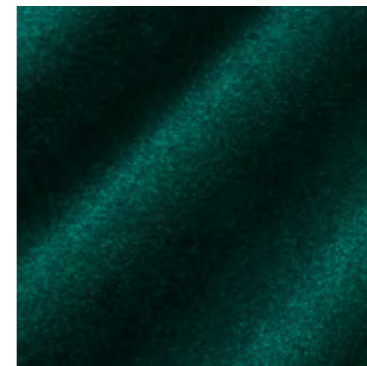
10660-678



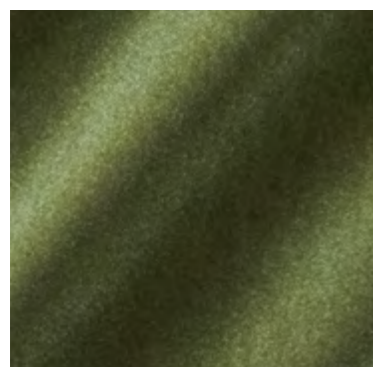
10660-693



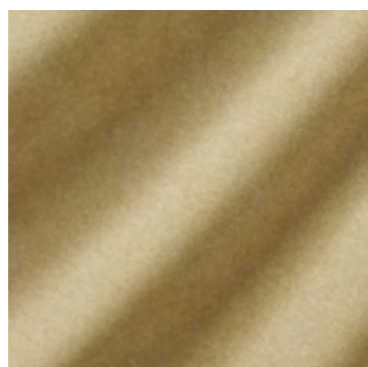
10660-775



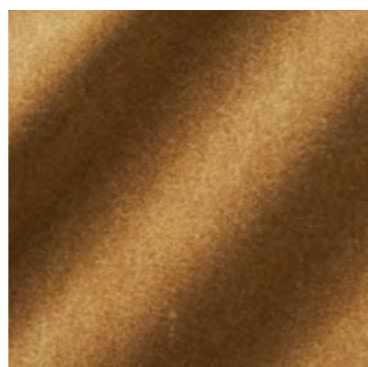
10660-778



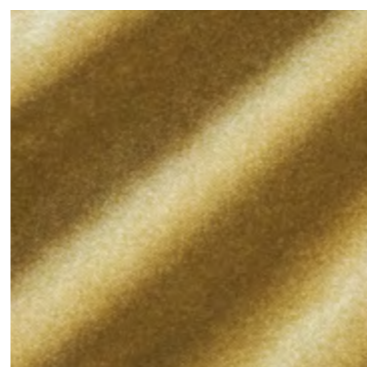
10660-785



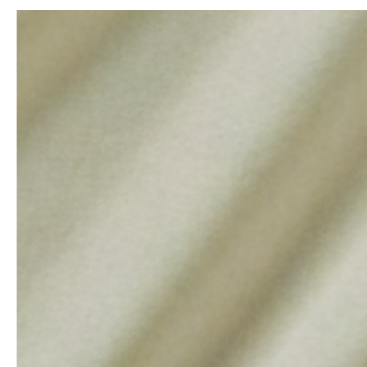
10660-813



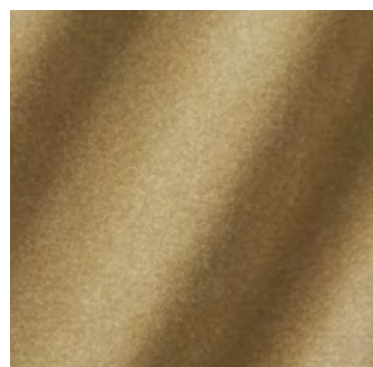
10660-814



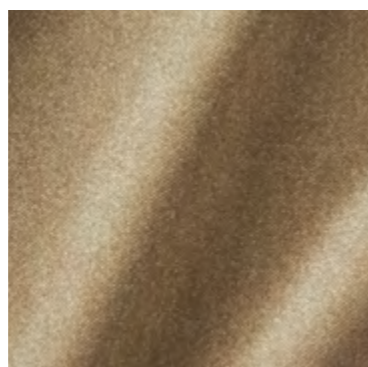
10660-815



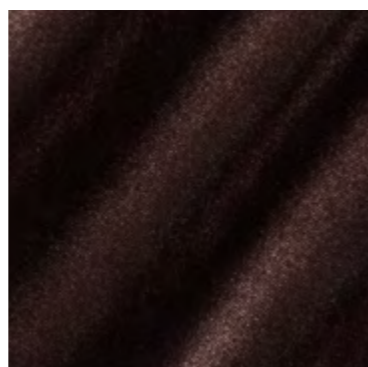
10660-882



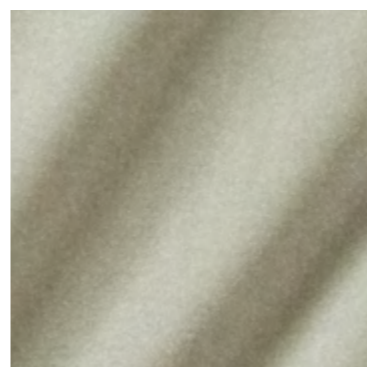
10660-884



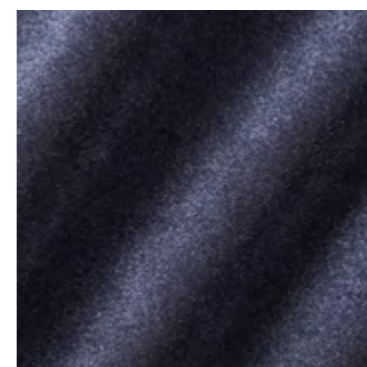
10660-886



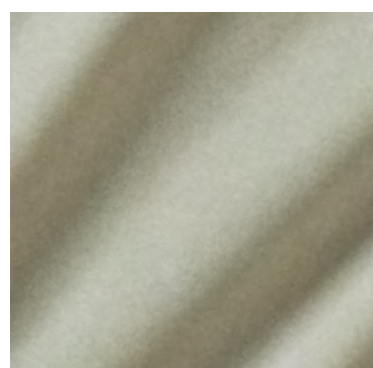
10660-889



10660-893



10660-959

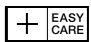







10660-993

ZIMMER + ROHDE

NAME Infinity Plus
ARTICLE NUMBER 10660
CATEGORY Upholstery

FABRIC WIDTH 140 cm
MATERIAL Ground: 100 % PES Pile: 100 % PAN
MARTINDALE 100.000

PROPERTIES 
CARE INSTRUCTIONS     



ATELIER



10901-568



10901-888



10901-894

OVERVIEW

ZIMMER + ROHDE

NAME Atelier
ARTICLE NUMBER 10901
CATEGORY Decoration

FABRIC WIDTH 140 cm
MATERIAL 74 % CO, 13 % PAN, 10 % PES, 3 % PA
MARTINDALE

PROPERTIES Recommend puddle on the floor
CARE INSTRUCTIONS

ATELIER embodies textile art of the highest caliber. Inspired by the tradition of woven carpets, this modern work of art was created as an exceptional decorative fabric. The geometric design is the result of multiple weaves and overlays of different yarns. The repeat extends across the entire width of the fabric and is finished off by a voluminous fringed edge on both sides.



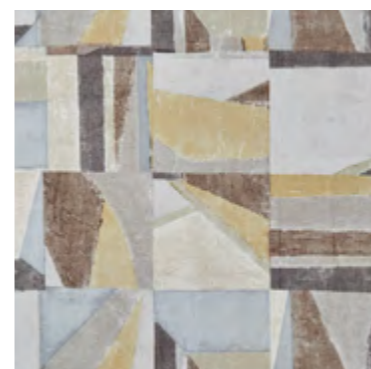
OPENING



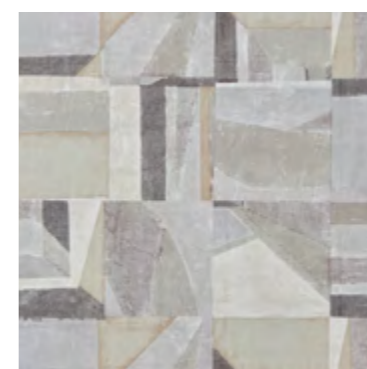
10902-358



10902-464



10902-686



10902-892

ZIMMER + ROHDE

NAME Opening
ARTICLE NUMBER 10902
CATEGORY Decoration

FABRIC WIDTH 140 cm Usable Width: 135 cm
MATERIAL 62 % CO, 38 % LI
MARTINDALE

PROPERTIES
CARE INSTRUCTIONS

The colored areas of OPENING appear like a lively mosaic in finely coordinated shades. Textured and colored papers were used as a template for this digital print and arranged to form a dynamic surface. Printed on a casual linen and cotton base cloth, this decorative fabric has a charming drape.



VENUE

OVERVIEW

ZIMMER + ROHDE



10903-886



10903-898



10903-991



10903-993

NAME Venue
ARTICLE NUMBER 10903
CATEGORY Decoration

FABRIC WIDTH 300 cm
MATERIAL 60 % PES, 15 % LI, 12 % CLY, 9 % CO, 3 % CV
MARTINDALE

PROPERTIES 
CARE INSTRUCTIONS      

Round, shifting shapes form the design of VENUE on an elegant sheer base. A new technique makes this burnout possible with specially developed textured effect yarns. The soft patina on the surface is also present in the sheer background which creates an exciting interplay at the window.



SETUP



10904-882



10904-894



10904-988

OVERVIEW

ZIMMER + ROHDE

NAME
Setup

ARTICLE NUMBER
10904

CATEGORY
Sheers

FABRIC WIDTH
298 cm ↑↓

MATERIAL
**40 % PES, 34 % LI,
14 % CV, 12 % CO**

MARTINDALE

PROPERTIES



CARE INSTRUCTIONS



SETUP is a modern, wide-width panel in three natural colorways that play with different contrasts.

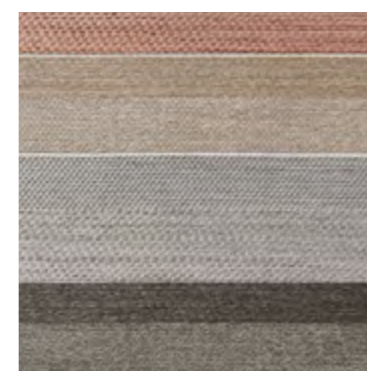
The base in the lower half of this decorative fabric shows a hand-drawn, grid-like geometry that disappears excitingly towards the top. Created using the Scherli technique, the design appears with the help of a hand-drawn jacquard structure alternating with the plain, dry background, which continues upwards as a surface.



STAGE



10905-196



10905-486



10905-898



10905-981

ZIMMER + ROHDE

NAME Stage
ARTICLE NUMBER 10905
CATEGORY Sheers

FABRIC WIDTH 300 cm
MATERIAL 51 % PAN, 49 % PES
MARTINDALE

PROPERTIES 
CARE INSTRUCTIONS     

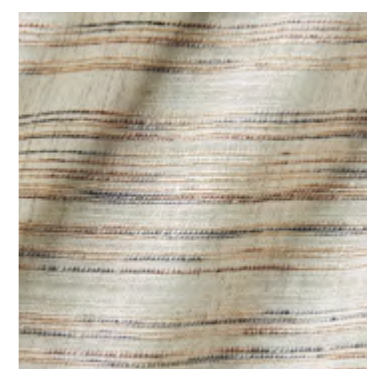
Horizontal block stripes form the basis for this elegant, semi-sheer drapery fabric. The combination of different weave structures establishes an exciting interplay of dense and more transparent surfaces. Finely coordinated color combinations create a gentle gradient in each of the four colorways in order to emphasize the design.



STUDY



10906-595



10906-883



10906-891




10906-898

ZIMMER + ROHDE

NAME Study
ARTICLE NUMBER 10906
CATEGORY Decoration

FABRIC WIDTH 320 cm
MATERIAL 65 % LI, 17 % CO, 12 % PA, 5 % PES, 1 % MTF
MARTINDALE

PROPERTIES 
CARE INSTRUCTIONS      

The playful appearance of STUDY looks like fine layers of rock. A unique yarn effect runs randomly through the casual linen base. Subtle shiny accents are integrated into the yarn, which provide an exciting contrast to the natural materials. Softly flowing drapery that is offered in 6 subtle neutral colorways.

OVERVIEW

ZIMMER + ROHDE






10906-990



10906-993

NAME Study
ARTICLE NUMBER 10906
CATEGORY Decoration

FABRIC WIDTH 320 cm
MATERIAL 65 % LI, 17 % CO, 12 % PA, 5 % PES, 1 % MTF
MARTINDALE

PROPERTIES 
CARE INSTRUCTIONS     



FAME



10907-794



10907-883



10907-886









10907-900

ZIMMER + ROHDE

NAME Fame
ARTICLE NUMBER 10907
CATEGORY Sheers

FABRIC WIDTH 320 cm ↑↓
MATERIAL 76 % HA, 24 % CO
MARTINDALE

PROPERTIES Recommend puddle on the floor 
CARE INSTRUCTIONS     

With its high hemp content, the FAME article introduces this sustainable material into a Zimmer + Rohde collection for the first time ever. Hemp, which is just as traditional as linen and has been known for centuries, is produced in a much more ecological way; the plant itself requires very little water and is hardly susceptible to pests.

FAME allures with its exceptionally soft, voluminous feel and is the epitome of natural luxury.

OVERVIEW

ZIMMER + RHODE





10907-981



10907-992

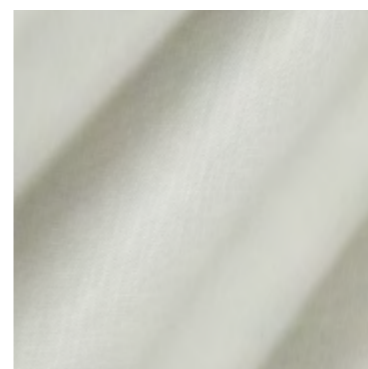
NAME Fame
ARTICLE NUMBER 10907
CATEGORY Sheers

FABRIC WIDTH 320 cm ↑↓
MATERIAL 76 % HA, 24 % CO
MARTINDALE

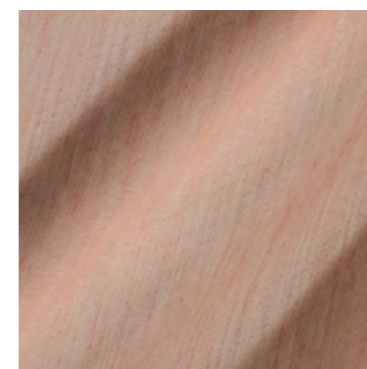
PROPERTIES Recommend puddle on the floor 
CARE INSTRUCTIONS 



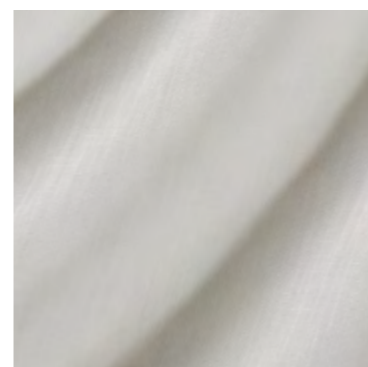
AERO NEW FR



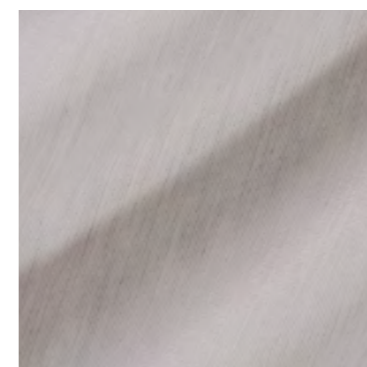
10908-184



10908-336



10908-444



10908-446

ZIMMER + ROHDE

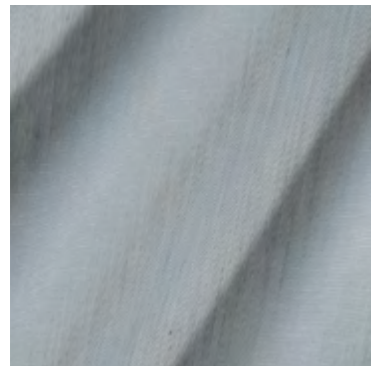
NAME Aero New FR
ARTICLE NUMBER 10908
CATEGORY Sheers

FABRIC WIDTH 330 cm ↑↓
MATERIAL 77 % PES CS, 23 % PES
MARTINDALE

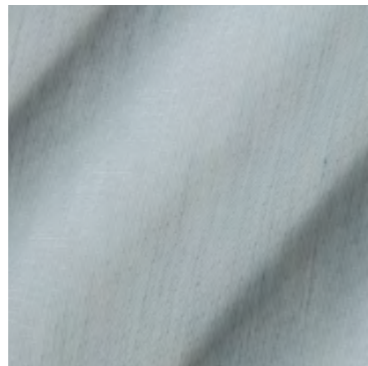
PROPERTIES
CARE INSTRUCTIONS

AERO NEW FR follows our successful best-seller AERO. A superfine lino warp combined with the thinnest weft threads in Trevira CS makes this highly transparent, feather-light quality possible. A subtle strié gives the 20 colorways of AERO NEW FR a soft elegant shimmer. Like its predecessor, AERO NEW FR captivates with its light drape and offers both the obligatory natural shades and exciting color nuances.

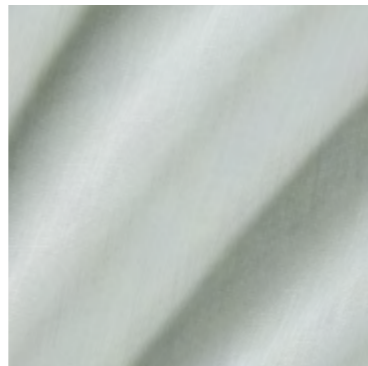
OVERVIEW



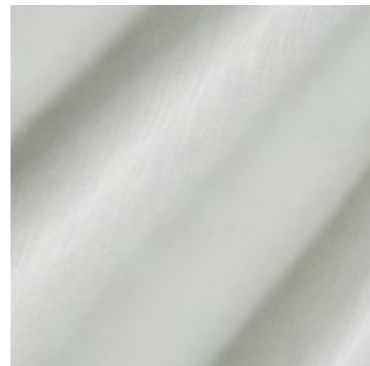
10908-557



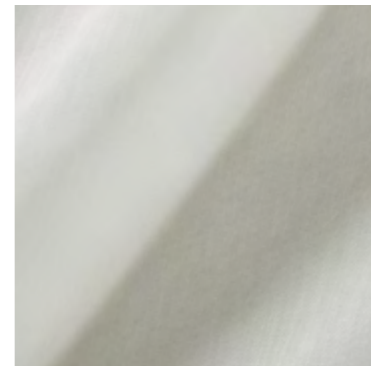
10908-566



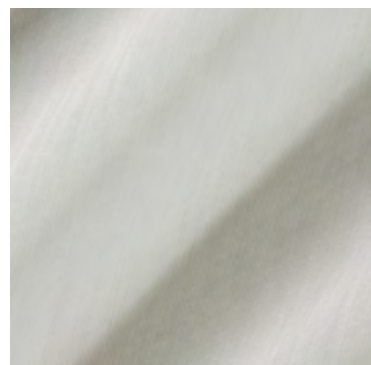
10908-665



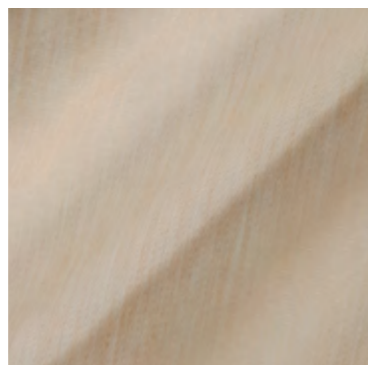
10908-882



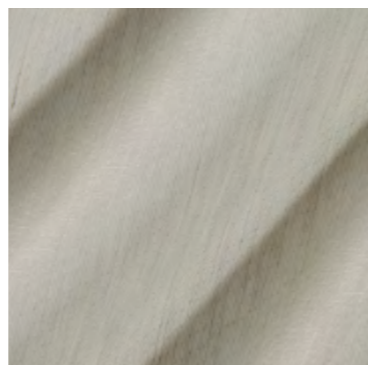
10908-883



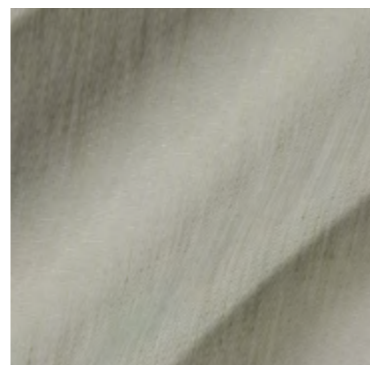
10908-884



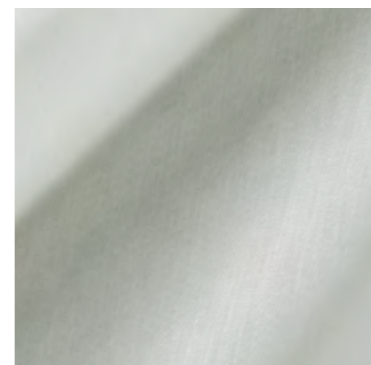
10908-885



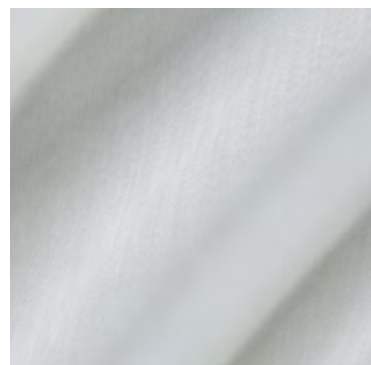
10908-886



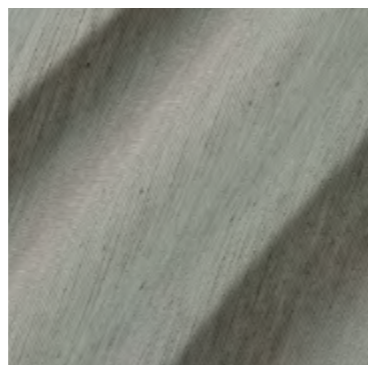
10908-887



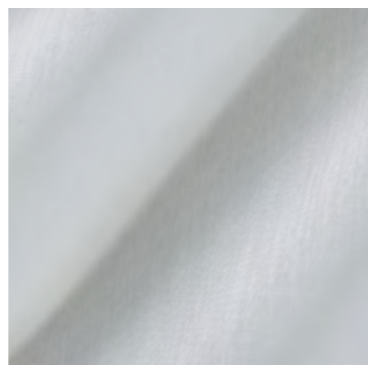
10908-891



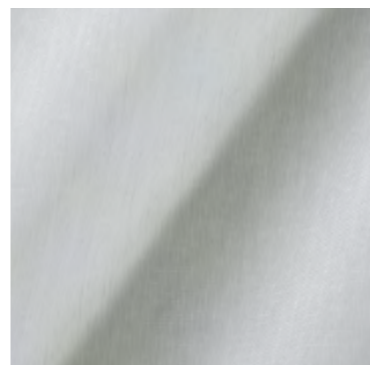
10908-980



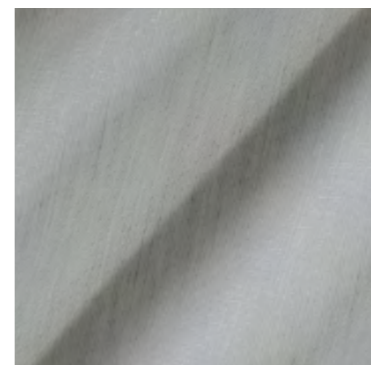
10908-988



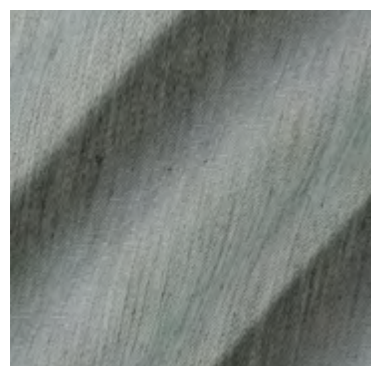
10908-990



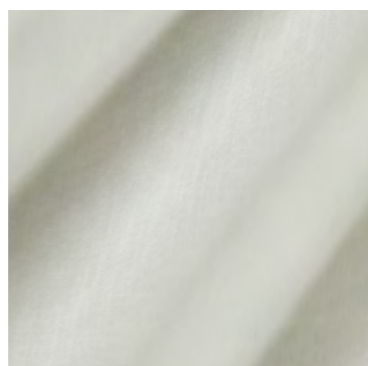
10908-994



10908-996



10908-999







10908-184

ZIMMER + ROHDE

NAME Aero New FR
ARTICLE NUMBER 10908
CATEGORY Sheers

FABRIC WIDTH 330 cm ↑↓
MATERIAL 77 % PES CS, 23 % PES
MARTINDALE

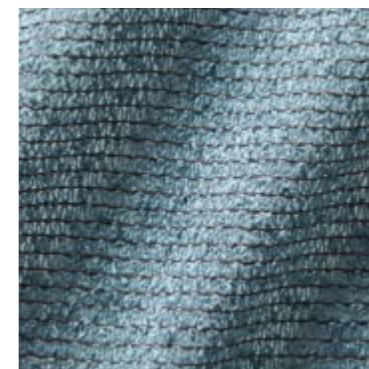
PROPERTIES  
CARE INSTRUCTIONS     



VIVID RE FR



10909-445



10909-656



10909-776



10909-883

OVERVIEW

ZIMMER + ROHDE

NAME Vivid RE FR
ARTICLE NUMBER 10909
CATEGORY Sheers

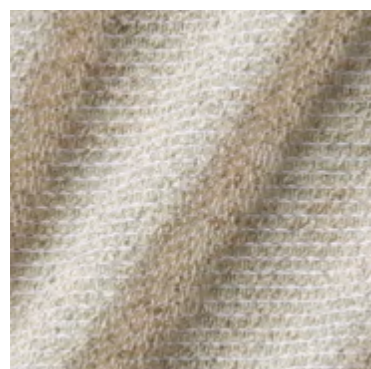
FABRIC WIDTH 300 cm ↑↓
MATERIAL 80 % PES FR, 20 % PES CS
MARTINDALE

PROPERTIES
CARE INSTRUCTIONS

A bouclé yarn specially developed for Zimmer + Rohde creates the character of the sustainable article VIVID RE FR. 60 % polyester from recycled PET bottles is used in the weft, the origin of which is no longer noticeable in the soft yarn. Woven on a lino warp, the bouclé can blossom softly in 12 standard colors. Its additional suitability for the Contract market allows for a wide and varied range of applications.

OVERVIEW

ZIMMER + ROHDE



10909-884



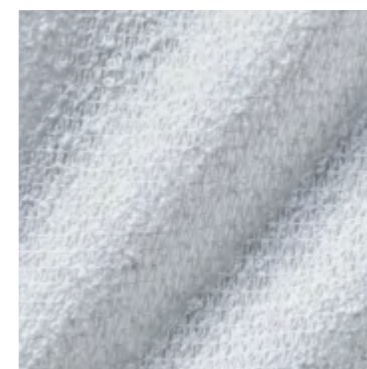
10909-886



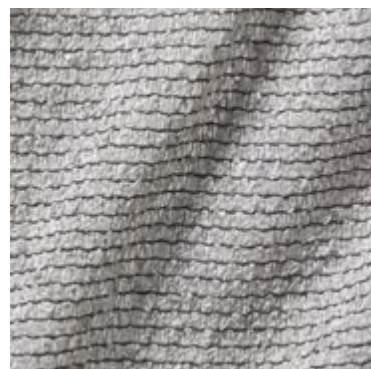
10909-888



10909-892



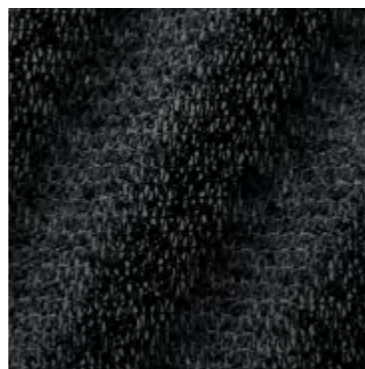
10909-900



10909-987



10909-991



10909-999

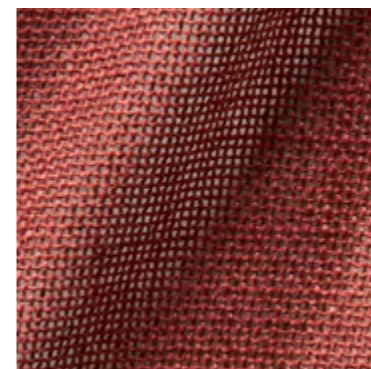
NAME Vivid RE FR
ARTICLE NUMBER 10909
CATEGORY Sheers

FABRIC WIDTH 300 cm ↑↓
MATERIAL 80 % PES FR, 20 % PES CS
MARTINDALE

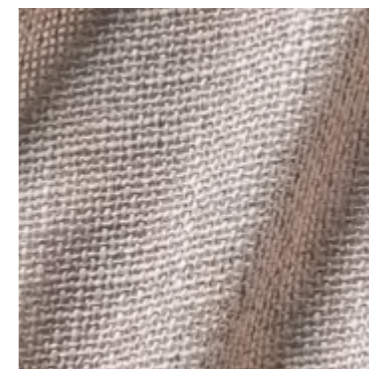
PROPERTIES
CARE INSTRUCTIONS



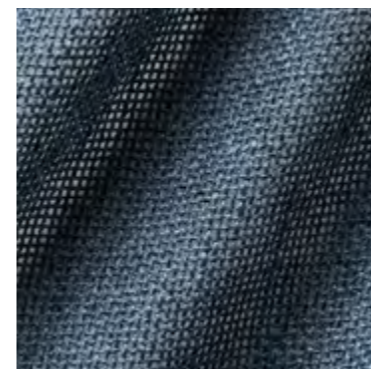
NOVEL RE FR



10910-338



10910-444



10910-559



10910-565

OVERVIEW

ZIMMER + ROHDE

NAME Novel RE FR
ARTICLE NUMBER 10910
CATEGORY Decoration

FABRIC WIDTH 300 cm ↑↓
MATERIAL 100 % PES FR
MARTINDALE

PROPERTIES
CARE INSTRUCTIONS

NOVEL RE FR radiates a natural subtlety and at the same time surprises with its thoroughly technical composition. A high-quality yarn in warp and weft consisting of 50 % recycled polyester was developed for a special dyeing process. In this process, two components are charged in opposite directions and thus attract the dyes to the yarn differently. The result is the beautiful mélange in the 15 colorways of the NOVEL RE FR open weave.

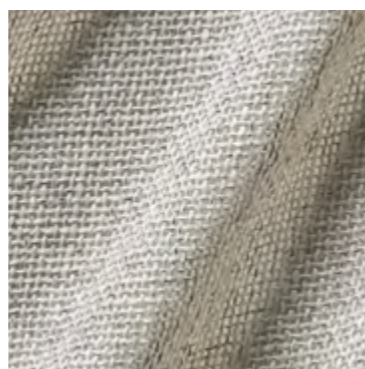
ZIMMER + ROHDE



10910-675



10910-786



10910-883



10910-884



10910-887



10910-891



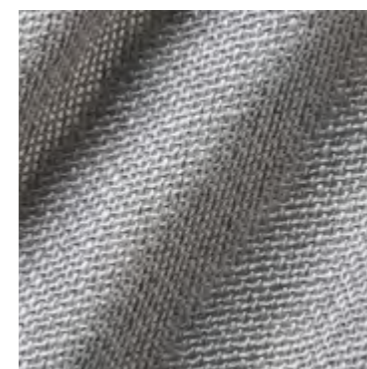
10910-892



10910-900



10910-993



10910-997



10910-999

NAME Novel RE FR
ARTICLE NUMBER 10910
CATEGORY Decoration

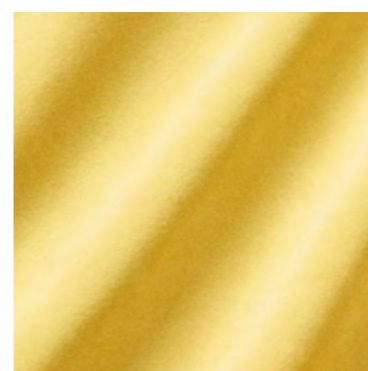
FABRIC WIDTH 300 cm ↑↓
MATERIAL 100 % PES FR
MARTINDALE

PROPERTIES
CARE INSTRUCTIONS

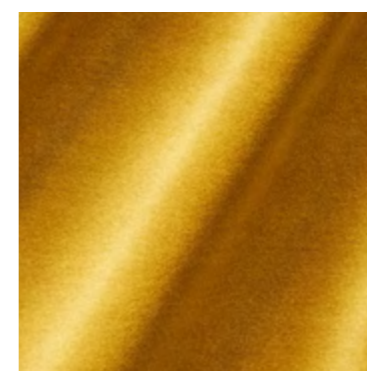


PENTHOUSE FR

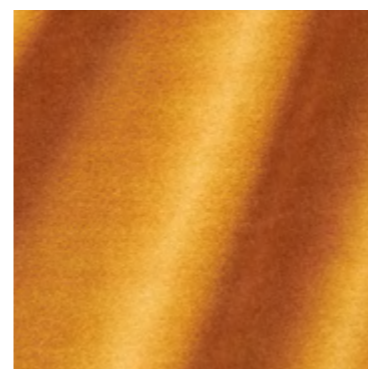
ZIMMER + ROHDE



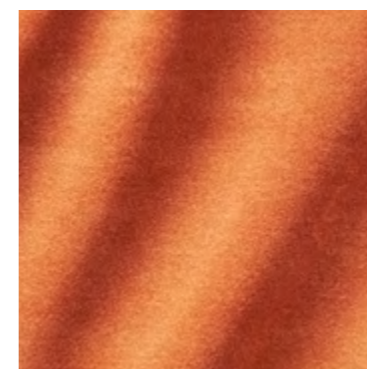
10911-113



10911-114



10911-235



10911-326

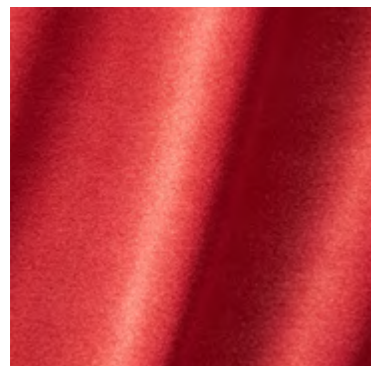
NAME Penthouse FR
ARTICLE NUMBER 10911
CATEGORY Decoration Upholstery

FABRIC WIDTH 300 cm ↑↓
MATERIAL 100 % PES FR
MARTINDALE 50.000

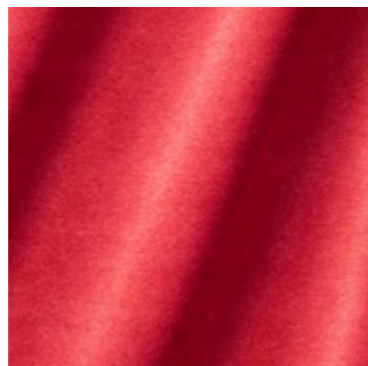
PROPERTIES
CARE INSTRUCTIONS

With its matte softness, the gently flowing decorative PENTHOUSE FR velour reflects the spirit of the times like no other material. PENTHOUSE FR not only stands for elegance, but also combines important practical aspects such as washability, wide-width and suitability for the commercial sector. The knitted velour is highly abrasion resistant due to its short, very dense pile and can be used for upholstery due to its superior properties. Available in 40 different shades, there's something for everyone here.

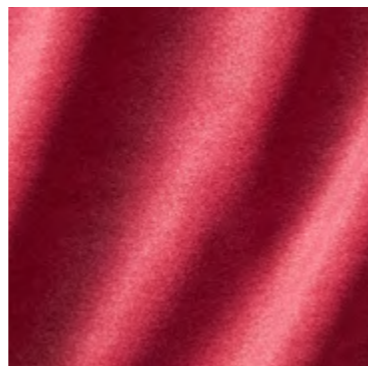
OVERVIEW



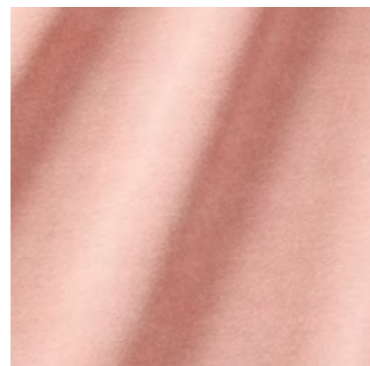
10911-336



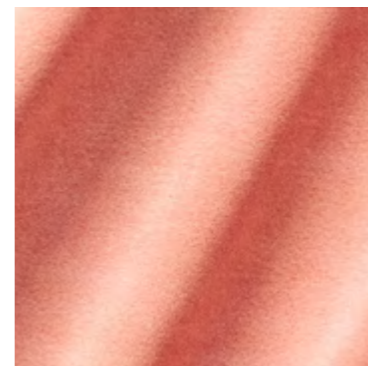
10911-337



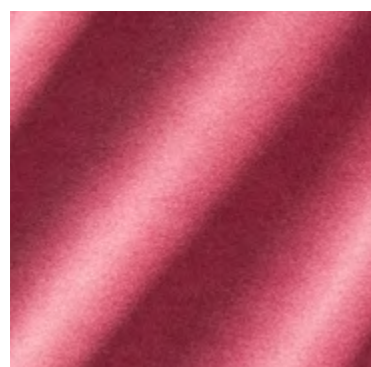
10911-347



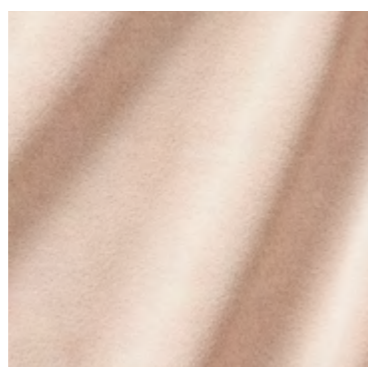
10911-434



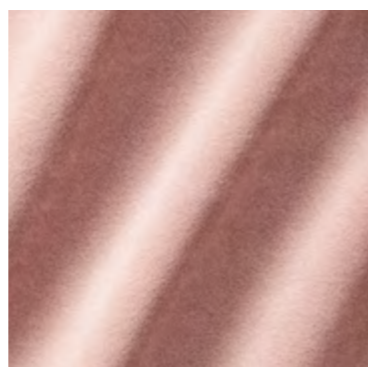
10911-435



10911-436



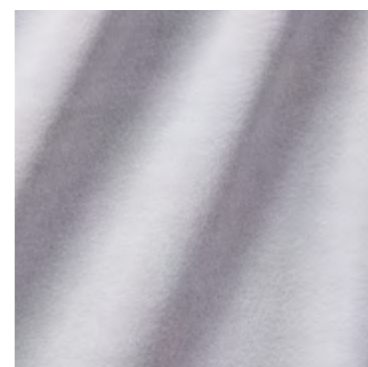
10911-443



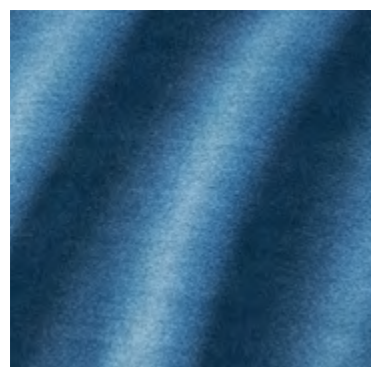
10911-445



10911-446



10911-454



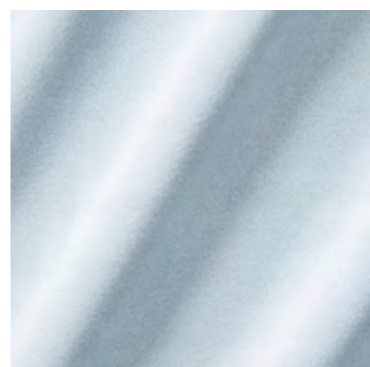
10911-558



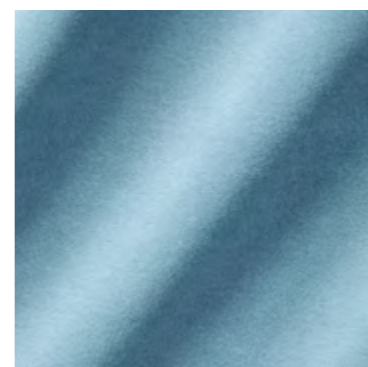
10911-567



10911-569



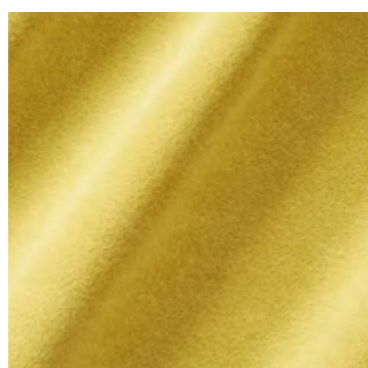
10911-654



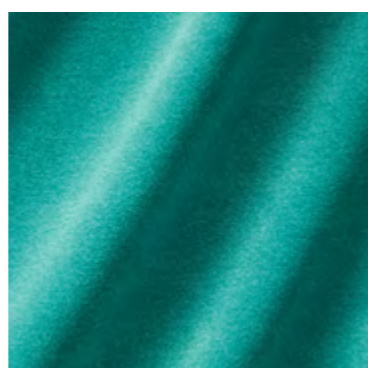
10911-656



10911-677



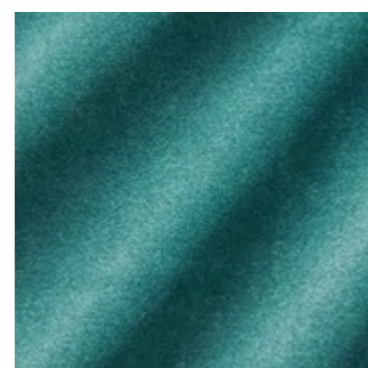
10911-713



10911-776



10911-777



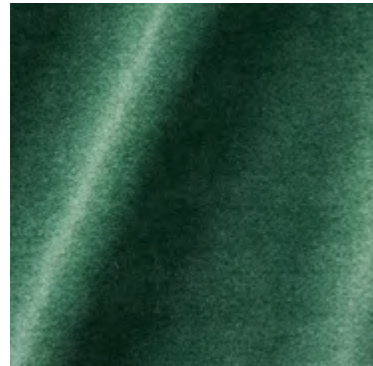
10911-778

ZIMMER + ROHDE

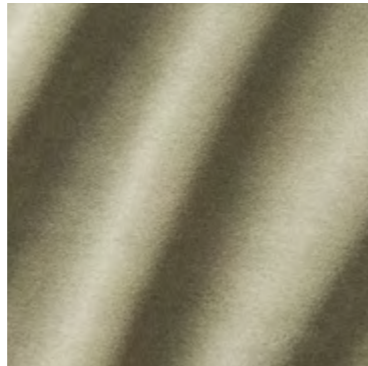
NAME Penthouse FR
ARTICLE NUMBER 10911
CATEGORY Decoration Upholstery

FABRIC WIDTH 300 cm ↑↓
MATERIAL 100 % PES FR
MARTINDALE 50.000

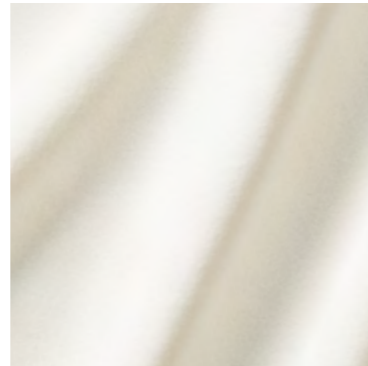
PROPERTIES
CARE INSTRUCTIONS



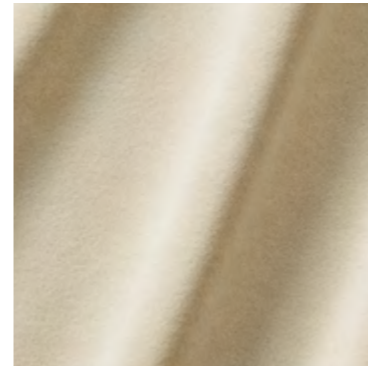
10911-779



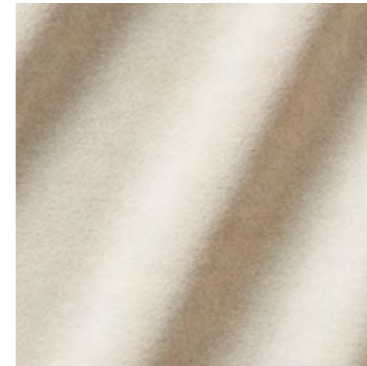
10911-877



10911-882



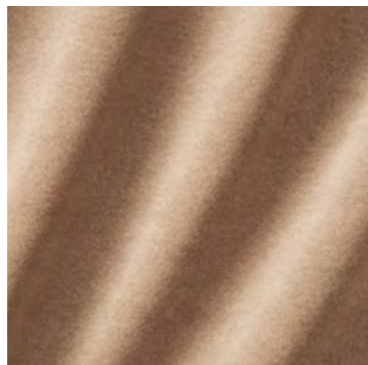
10911-883



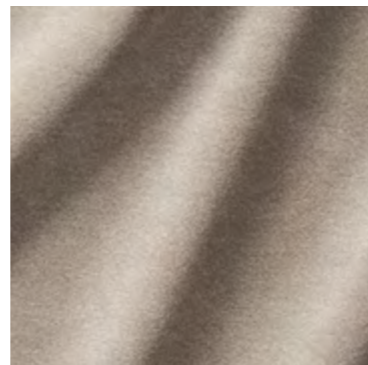
10911-884



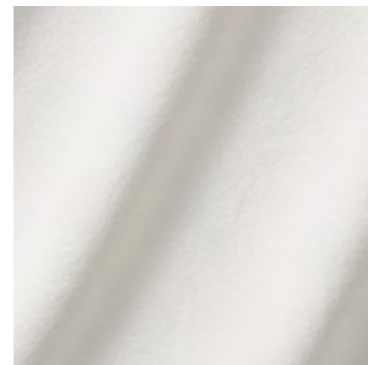
10911-885



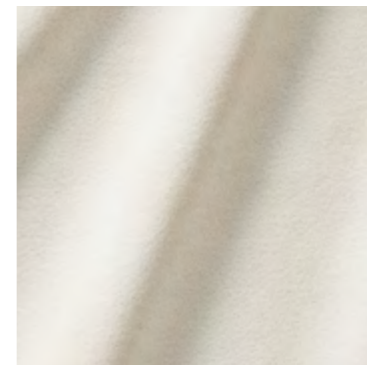
10911-887



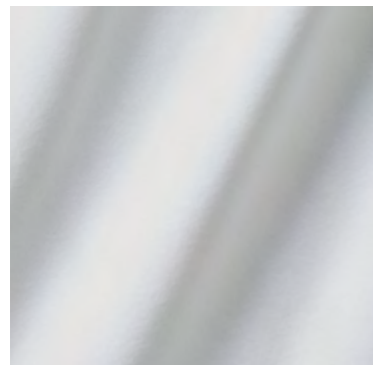
10911-888



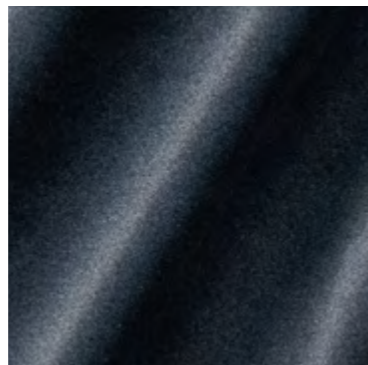
10911-891



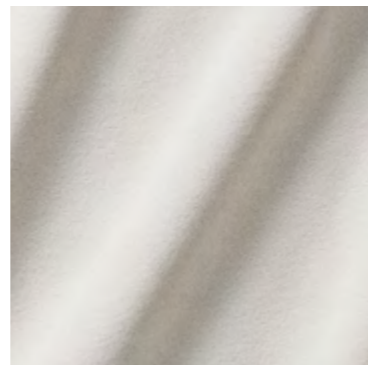
10911-892



10911-900



10911-959



10911-983



10911-988



10911-994



10911-998

OVERVIEW

ZIMMER + ROHDE

NAME Penthouse FR
ARTICLE NUMBER 10911
CATEGORY Decoration Upholstery

FABRIC WIDTH 300 cm ↑↓
MATERIAL 100 % PES FR
MARTINDALE 50.000

PROPERTIES 
CARE INSTRUCTIONS 

ORDER

COMPANY NAME

CUSTOMER NR

SHIP TO:

STREET

CITY / STATE / ZIP

ANY SPECIAL REQUEST

To submit your request: Please click the **SAVE & SEND** button, the PDF will be automatically attached to your email to us.

OVERVIEW

ZIMMER + ROHDE

IMPRINT

Zimmer + Rohde GmbH
Zimmersmühlenweg 14-18
61440 Oberursel/Frankfurt
Germany

www.zimmer-rohde.com
info@zimmer-rohde.com
Phone +49 (0) 6171 632 02

CEO
Torsten Poschardt

HR Bad Homburg, HRB 5073
Ust-IdNr. DE 812 646 222

SAVE & SEND