







ZIMMER+ROHDE

PRODUCT DATA SHEET

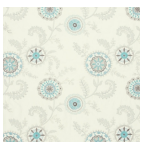
EDENBERRY 1044058



Brand: TRAVERS
Collection: Stanmore
Category: Decoration
Width: 143 cm
Material: Ground/Pile: 100% Flax (linen);
Embroidered: 100% Viscose;
Application: 60% Cotton, 40% Viscose
Rapport: † 58 ↔ 63 cm
Care:     
Instructions:
Use:

Article Description

EDENBERRY is inspired by traditional Uzbek Suzani textiles. Unlike usual Suzani the design EDENBERRY was created with a contemporary touch combining a modern flow with stylized Suzani motifs. The design was further enhanced with cord embroidery in the contour and in certain motifs. EDENBERRY is suitable for drapery with lining, bedding and pillows.



596



686

For sample orders please contact your representatives