

TEST REPORT

NUMBER

DATE

359/2022

07/09/2022

CLIENT

Zimmer + Rohde GmbH

Zimmersmühlenweg 14-16

61440 Oberursel

SPECIMENT DESCRIPTION

19606 MENTON

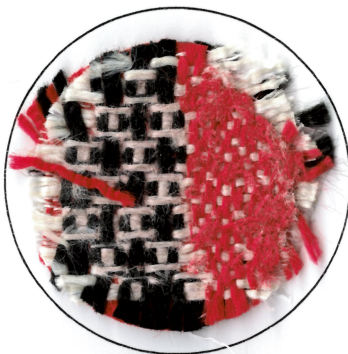
SAMPLE TESTED

Composition: 88%PP 12%PL

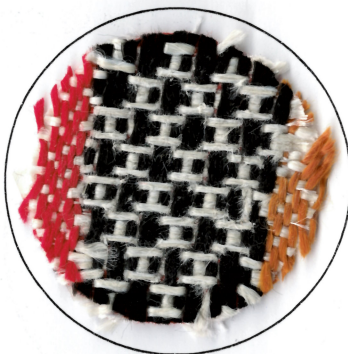
REFERENCE STANDARD

UNI EN ISO 12947-1-2/00

TESTED SAMPLES



35000 RUBS
BROKEN



30000 RUBS
END POINT

LAB MANAGER